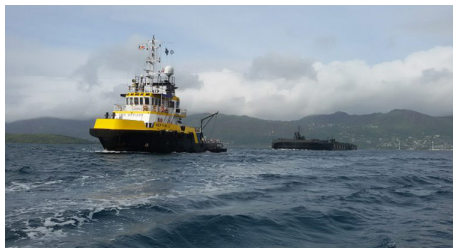


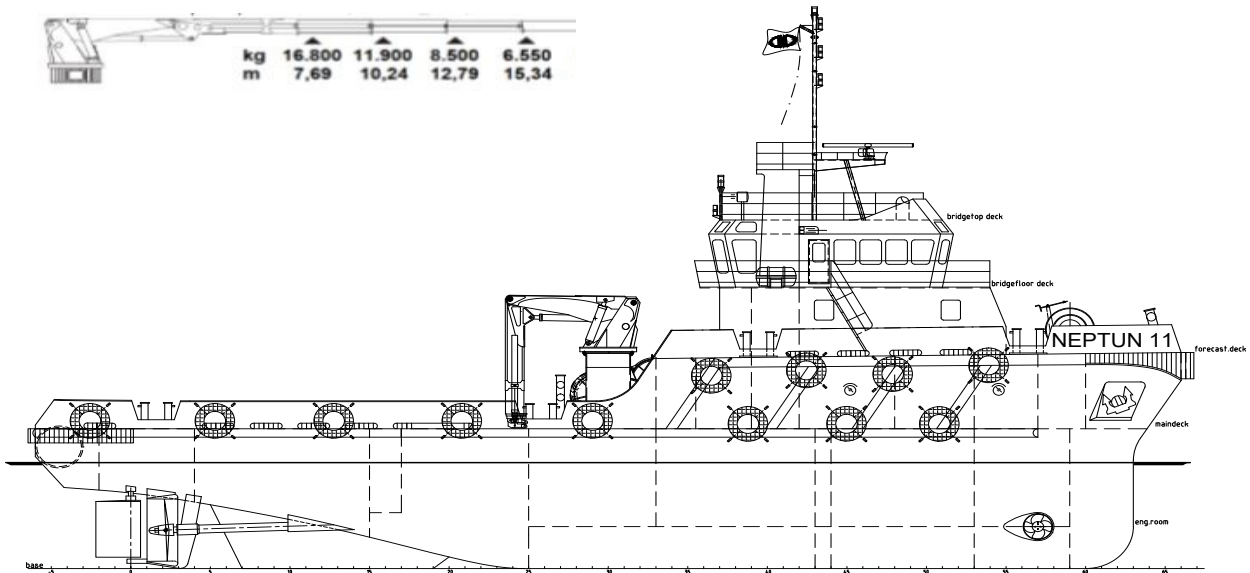


Neptun 11 | Anchor Handling Tug / Utility Vessel



CLASSIFICATIONS	Bureau Veritas HULL MACH AUT UMS Unrestricted Navigation
GENERAL	
FLAG	U.K. Gibraltar
DIMENSIONS	
LENGTH O.A..	36,00 meters
BEAM / WIDTH.	10,40 meters
DEPTH AT SIDES	5,00 meters
DRAFT (MIN. - MAX.)	3,80 - 4,15 meters
AIR DRAFT	17 meters
GROSS TONNAGE	459 GT
NET TONNAGE	137 NT
DECK CARGO CAP.	6x 1 TEU, 90 tons
CLEAR DECK AREA	120 m ²
CARGO DECK LOAD	5 tons per m ²
TANK CAPACITIES / TRANSFER	
FUEL OIL / GASOIL	305.000 liters
FRESH WATER	100.000 liters
FRESH WATER GENERATOR	2,5 m ³ / day
TRANSFER OF FUEL OIL	50 m ³ / hr
TRANSFER OF FRESH WATER	20 m ³ / hr
ACCOMODATION	
FACILITIES	Airconditioned, 9 berths

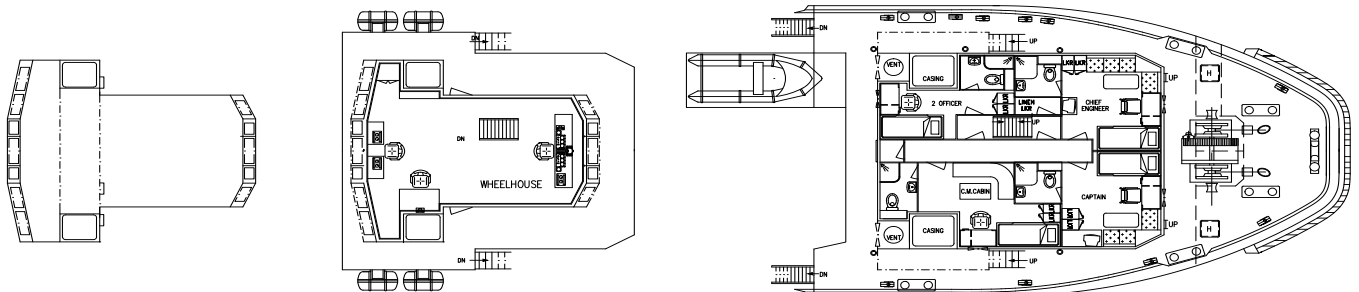
MACHINERY / PERFORMANCES	
BOLLARD PULL	42,8 tons
MAX. SPEED	12,0 knots
SAILING RADIUS WITHOUT TOW	14.000 miles
SAILING RADIUS WITH TOW	7.000 miles
MAIN ENGINES	2x Cummins KTA-50-M2
TOTAL OUTPUT	2.388 kW = 3.244 BHP
PROPULSION	Twin fixed propellers in nozzles
BOW THRUSTER	320 kW, van Ballegooy
GENERATOR SETS	2x Cummis AQM11-D(M) 1x Cummins 6CTA8.3-D(M)
GENERATOR POWER	2x 240 kW + 1x 136 kW / 400 V
HYDRAULIC POWERPACK	ME HPU-090426 / 2x 30 kW
DECK EQUIPMENT	
WINCH	ME Double Drum Waterfall
ANCHOR HANDLING	Pull Force 50T, Holding F. 100T
TOWING DRUM	Pull Force 50T, Holding F. 100T
TOW WIRES	2x 800 meters
TOW WIRES DIAMETER	48 millimeters
TUGGERWINCH	5 tons
TOWING PINS	2x SWL 200 ton
WIRE CATCHER	2x SWL 200 ton
STERN ROLLER	SWL 200 ton
MAIN MARINE DECK CRANE	170 t/m
MAXIMUM LIFT CAPACITY	See next page



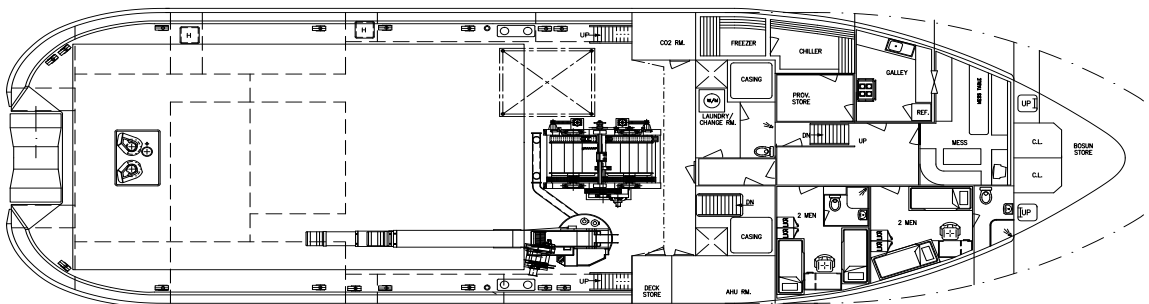
BRIDGETOPDECK

BRIDGEFLOORDECK

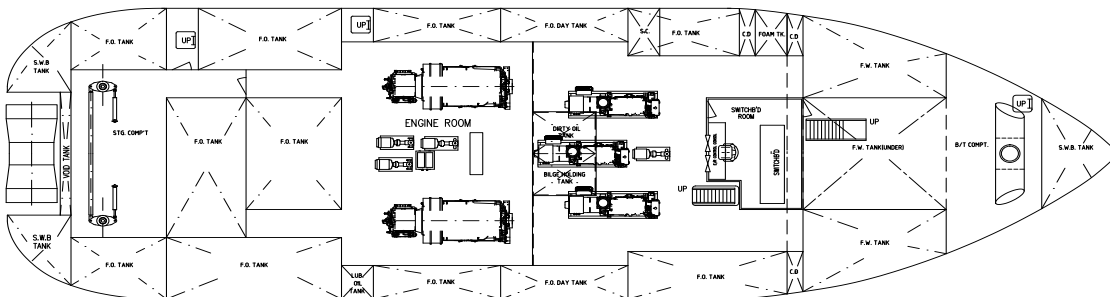
FORECASTLEDECK



MAINDECK



ENGINE ROOM



Neptun 11 | Anchor Handling Tug / Utility Vessel

For other configurations, please contact us:

T +31 (0)184 621 423 E info@neptunmarine.com W www.neptunmarine.com

Version: V.02

