

EuroCarrier 1206 | Workboat

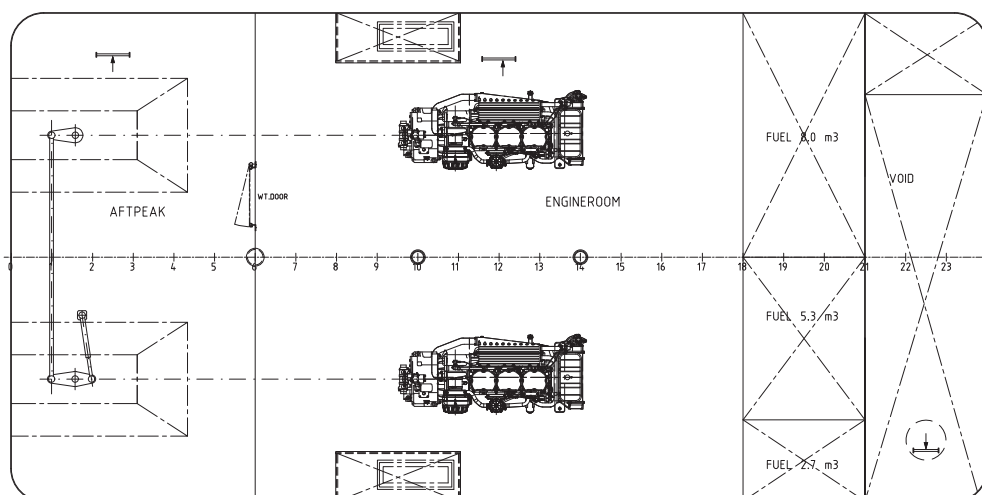
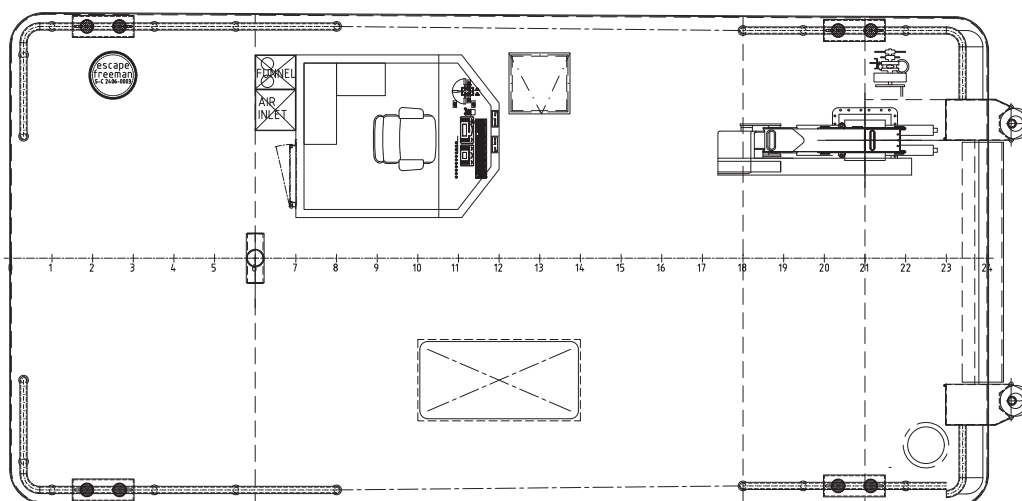
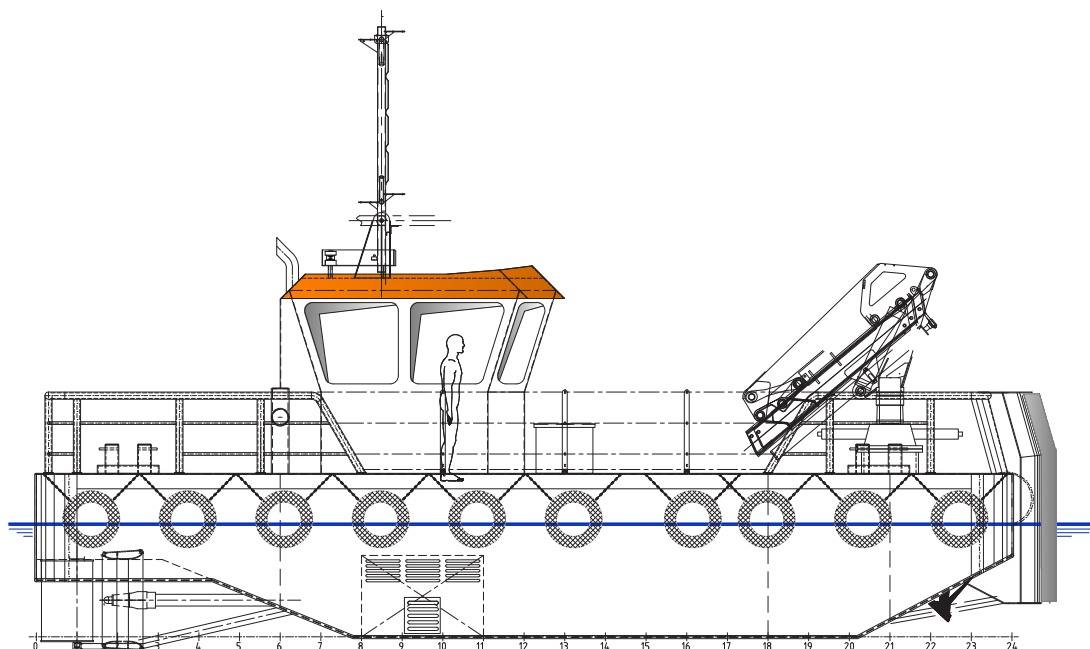


The robust, efficient and flexible design of the EuroCarrier makes it one of the best vessels for anchor handling, dredging support and survey activities. The EuroCarrier can be adapted to perfectly fit any project within a short time.



CLASSIFICATION	Bureau Veritas I ✕ HULL • MACH • AUT-UMS, Coastal Area, Multi-Purpose/Special Service Ship
DIMENSIONS	
LENGTH O.A.	12,60 meters
BREADTH MLD.	6,04 meters
DEPTH AT SIDE	1,80 meters
DRAFT	1,40 meters
PERFORMANCES	
SPEED	7 knots (approx.)
BOLLARD PULL	7 tons
PROPULSION	
MAIN ENGINES	2x Caterpillar C9.3
TOTAL POWER	750 hp at 1800 RPM
PROPELLERS	1000 mm diameter in nozzle
AUXILIARIES	
ELECTRICAL SYSTEM	24 Volt
AC UNIT COMPRESSOR	Electrical by generator

TANKS	
FUEL OIL	16 m ³
DECK LAY-OUT	
DECK CRANE FORWARD	Heila HLM 25-2S
DECK	Azobé deck covering
TOWING PINS	Fore ship set towing pins manual
FENDERING	Tire fendering at sides, pushbow fendering fore ship
FACILITIES	
WHEELHOUSE	Air-conditioned wheelhouse
SAFETY	LSA for 4 persons
OPTIONS	
DECK CRANE AFT	
CAPSTANS	3T hydraulic driven
DECKWINCH	15 T hydraulic driven
TOWING HOOK	Mampaey 8 tons SWL
ELECTRICAL SYSTEM	240/400 V



EuroCarrier 1206 | Workboat

For more information, please contact us on:

T +31 (0)184 621 423 E info@neptunemarine.com W www.neptunemarine.com

Version: V.01

