



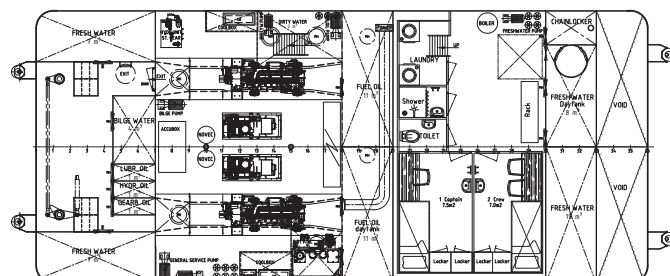
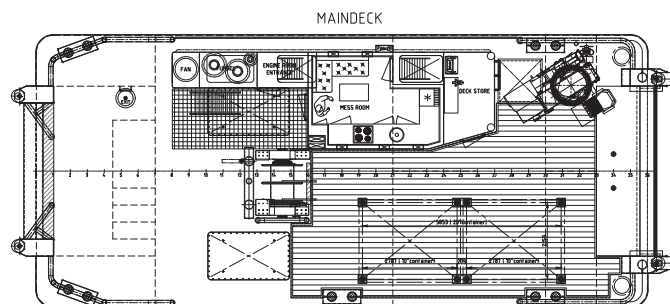
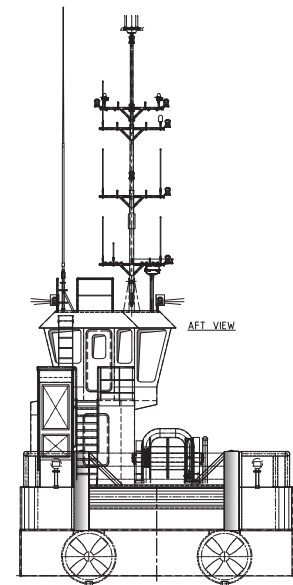
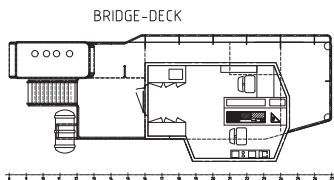
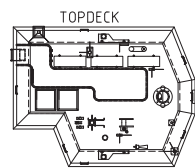
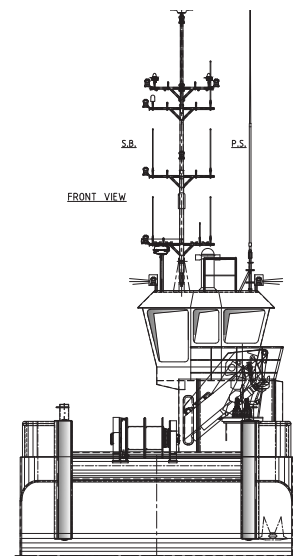
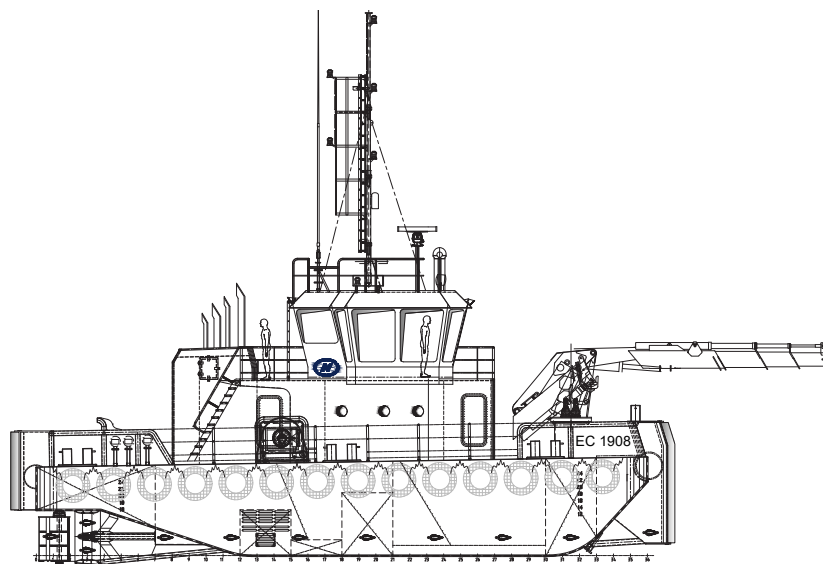
EuroCarrier 1908 | Workboat



The robust, efficient and flexible design of the EuroCarrier makes it one of the best vessels for anchor handling, dredging support and survey activities. The EuroCarrier can be adapted to perfectly fit any project within a short time.



CLASSIFICATION	Bureau Veritas I ✕ HULL • MACH • AUT-UMS, Coastal Area, Multi-Purpose/Special Service Ship GMDSS Area A1	
DIMENSIONS		
LENGTH O.A.	19,50 meters	
BREADTH MLD.	8,00 meters	
DEPTH AT SIDE	2,60/2,90 meters	
DRAFT	1,90 meters	
GROSS TONNAGE	107	
NET TONNAGE	32	
PERFORMANCES		
SPEED	9 knots (approx.)	
BOLLARD PULL	10 tons	
PROPULSION		
MAIN ENGINES	2 x Volvo D13	
TOTAL POWER	2 x 331 kW at 1800 RPM	
PROPELLERS	1350 mm diameter in nozzle	
AUXILIARIES		
GENERATOR SETS	2 x Volvo D5A TA	
GENERATOR POWER	2x 85 kW @ 1500 RPM	
HYDRAULIC POWER PACK	Electrical driven	
TANKS		
FUEL OIL	22 m ³	
FRESH WATER	37 m ³	
DECK LAY-OUT		
ANCHOR HANDLING / TOWING WINCH	Split drum type	
PULLING FORCE	15 tons at 1 st layer	
HAULING SPEED	7m/min - 21m/min	
DECK CRANE FORWARD	Heila HLRM 65-3S	
DECK	Azobé deck covering	
TOWING HOOK	Mampaey 20 tons SWL	
TOWING PINS	Fore ship set towing pins manual	
FENDERING	Tire fendering at sides, pushbow fendering fore- and aft ship	
ACCOMMODATION		
FACILITIES	Day accommodation for 3-crew	
OPTIONS		
DECK CRANE AFT	Heila HLRM 25-2S	
CAPSTANS	5 ton, hydraulic driven	
DAY AND NIGHT ACCOMMODATION	Air-conditioned accommodation for 3 crew members	



EuroCarrier 1908 | Workboat

For more information, please contact us on:

T +31 (0)184 621 423 E info@neptunemarine.com W www.neptunemarine.com

Version: V.01

