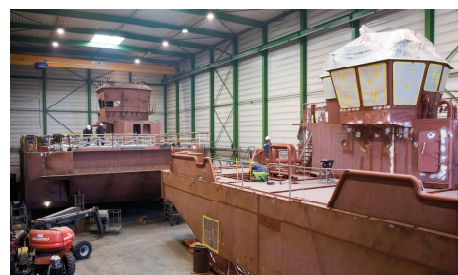
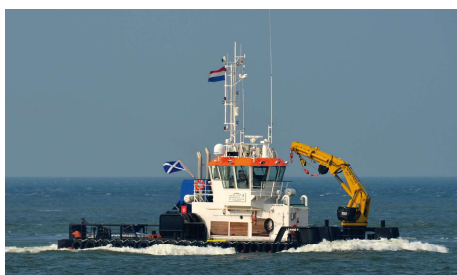




EuroCarrier 2495 | Workboat

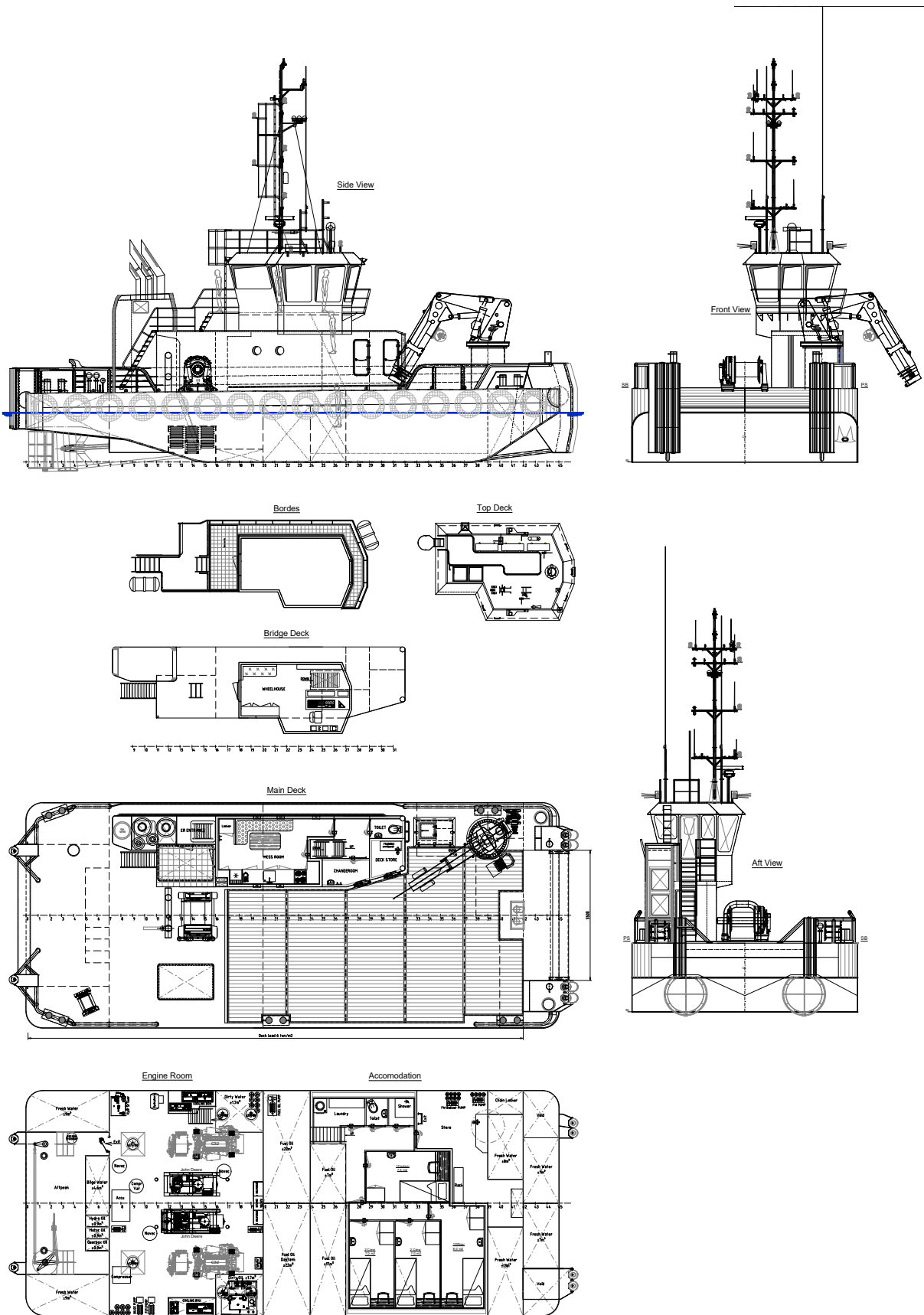


The robust, efficient and flexible design of the EuroCarrier makes it one of the best vessels for anchor handling, dredging support and survey activities. The EuroCarrier can be adapted to perfectly fit any project within a short time.



CLASSIFICATION	Bureau Veritas I ✕ HULL • MACH • AUT-UMS, Unrestricted Nav., Multi-Purpose / Special Service GMDSS Area A2
DIMENSIONS	
LENGTH O.A.	24,45 meters
BREADTH MLD.	9,54 meters
DEPTH AT SIDE	2,90/3,10 meters
DRAFT	2,10 meters
GROSS TONNAGE	168
NET TONNAGE	50
PERFORMANCES	
SPEED	10 knots
BOLLARD PULL	22 tons
PROPULSION	
MAIN ENGINES	2x Caterpillar C32
TOTAL POWER	1268 kW at 1800 RPM
PROPELLERS	1500mm diameter in nozzle
AUXILIARIES	
GENERATOR SETS	2x John Deere 6068
TOTAL E-POWER	254 kW
HYDRAULIC POWER PACK	2x 75 kW

TANKS	
FUEL OIL	69 m ³
FRESH WATER	55 m ³
DECK LAY-OUT	
ANCHOR HANDLING / TOWING WINCH	Split drum type
PULLING FORCE	50 tons at 1 st layer
HAULING SPEED	7m/min - 21m/min
TUGGER WINCH	Single drum type
PULLING FORCE	10 tons at 1 st layer
DECK CRANE FORWARD	Heila HLRM 170-45
DECK	Azobé deck covering
TOWING HOOK	Mampaey 25 tons SWL
FENDERING	Tire fendering at sides, pushbow fendering fore- and aft ship
ACCOMMODATION	
FACILITIES	Air-conditioned accommodation for 6 persons.
OPTIONS	
DECK CRANE AFT	Heila HLRM 25-45
FENDERING	M-fendering at the corners
CAPSTANS	5 ton, hydraulic driven
TOWING PINS	Fore ship set towing pins manual
WINCH ON FWD CRANE	5 tons



EuroCarrier 2495 | Workboat

For more information, please contact us on:

T +31 (0)184 621 423 E info@neptunemarine.com W www.neptunemarine.com

Version: V.01

