



EuroJack-Up 3923 | Jack-up barge

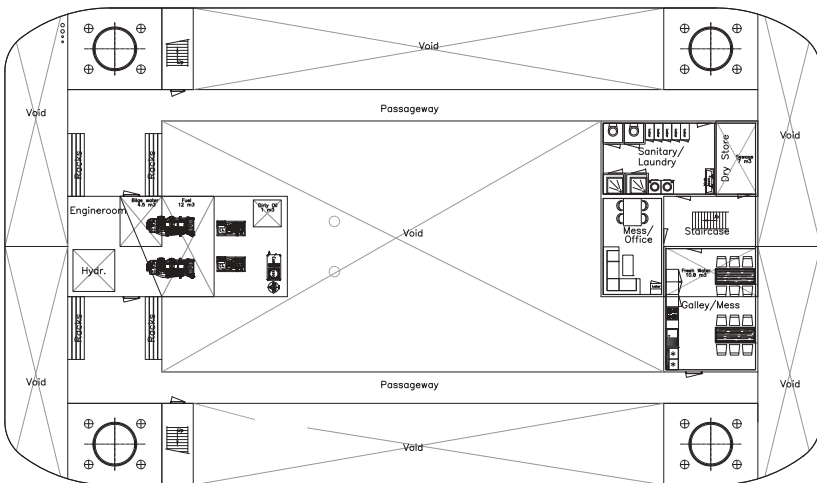
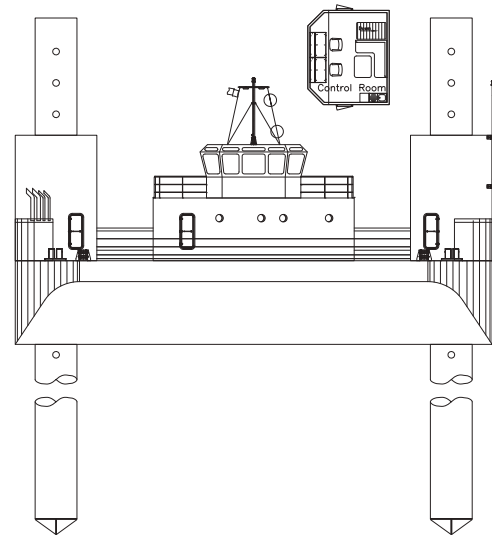
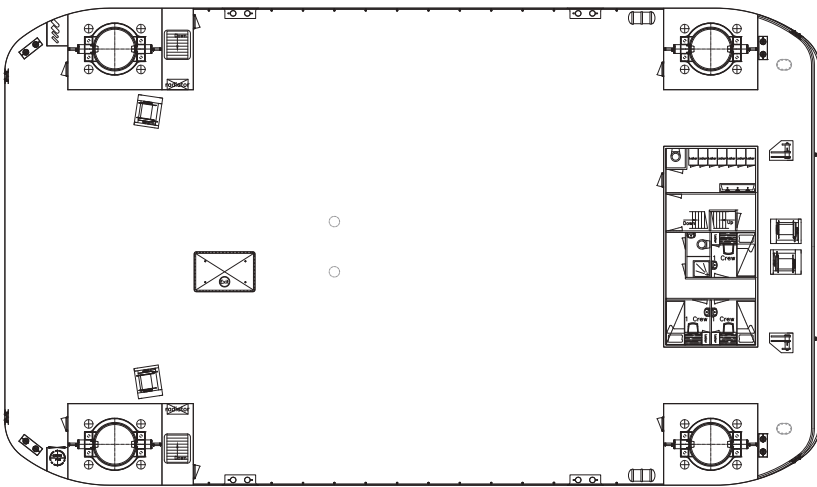
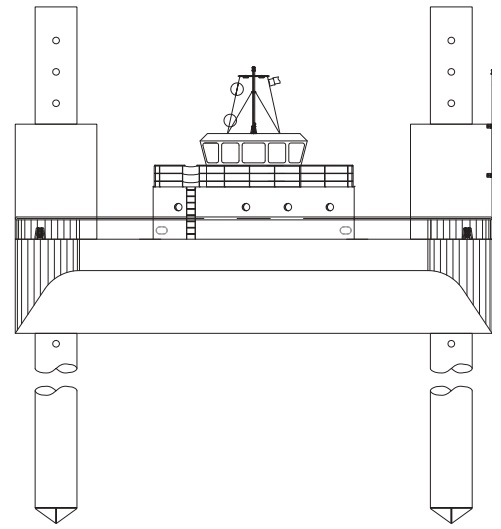
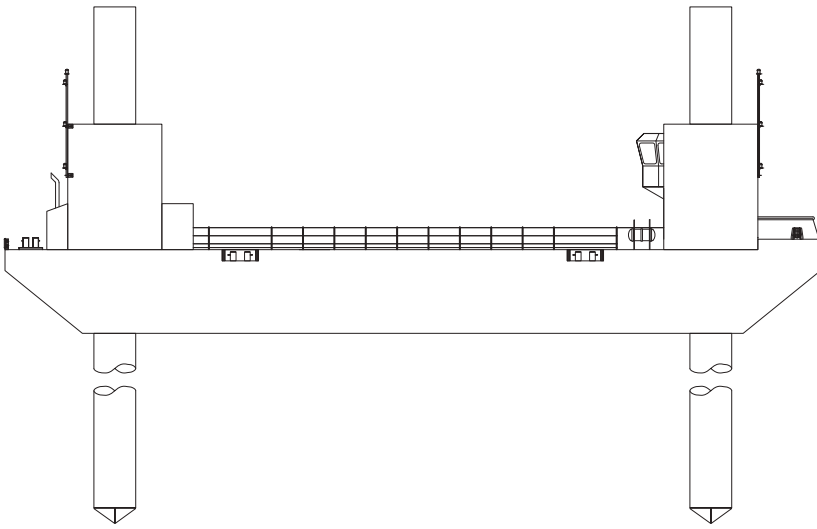


The EuroJack-Up is a multi-purpose jack-up barge design, which offers solutions to all kinds of maritime operations such as offshore construction. It can be modified to fit your demands. This could either be the installation of propulsion, or the installation of a heavy lift crane to fit your project.



CLASSIFICATION	Bureau Veritas I ✘ HULL • MACH Offshore Self Elevating Unit, Coastal Area, Transit over 20 miles from shore with HS < 2.5m
DIMENSIONS	
LENGTH O.A.	39,00 meters
BREADTH MLD.	22,80 meters
DEPTH AT SIDE	4,00 meters
DRAFT	3,00 meters
OPERATING CONDITIONS	
MAX. DESIGN WATER DEPTH	35 meters
SPUD LEGS	
LENGTH	66,00 meters
DIAMETER	2,00 meters
WEIGHT	175 tons
SPUD CAN	Optional
AUXILIARIES	
GENERATOR SETS	2x Caterpillar C4.4
TOTAL E-POWER	142,4 kW
FIFI	Certified fifi system
JACK-UP	Single acting w/o freefall
ACCOMMODATION	
FACILITIES	Air-conditioned accommodation for 7 persons. Galley/mess is equipped for 20 persons

CAPACITY	
FUEL OIL	12 m ³
HYDRAULIC OIL	10,8 m ³
JACKING PARAMETERS	
JACKING SPEED	15 m/hour
VARIABLE LOAD (PAYLOAD)	approx. 750 tons
PRELOAD FORCE PER LEG	750 tons
PARAMETERS AT 30M DEPTH	
CURRENT	1,5 m/sec
WIND VELOCITY(SURVIVAL)	16 m/sec (25 m/sec)
SIGNIF. WAVE HEIGHT (SURVIVAL)	3,0 meters (5,0 meters)
MAX. WAVE HEIGHT (SURVIVAL)	5,58 meters (9,30 meters)
PARAMETERS AT 35M DEPTH	
CURRENT	1,5 m/sec
WIND VELOCITY (SURVIVAL)	25 m/sec
SIGNIF. WAVE HEIGHT (SURVIVAL)	2,0 meters
MAX. WAVE HEIGHT (SURVIVAL)	3,72 meters
OPTIONS	
POSITIONING SYSTEM	4-point mooring system
ADDITIONAL ACCOMMODATION	Modular units



EuroJack-Up 3923 | Jack-up barge

For more information, please contact us on:

T +31 (0)184 621 423 E info@neptunemarine.com W www.neptunemarine.com

Version: V.01

