

EuroPontoon 7625 | Pontoon

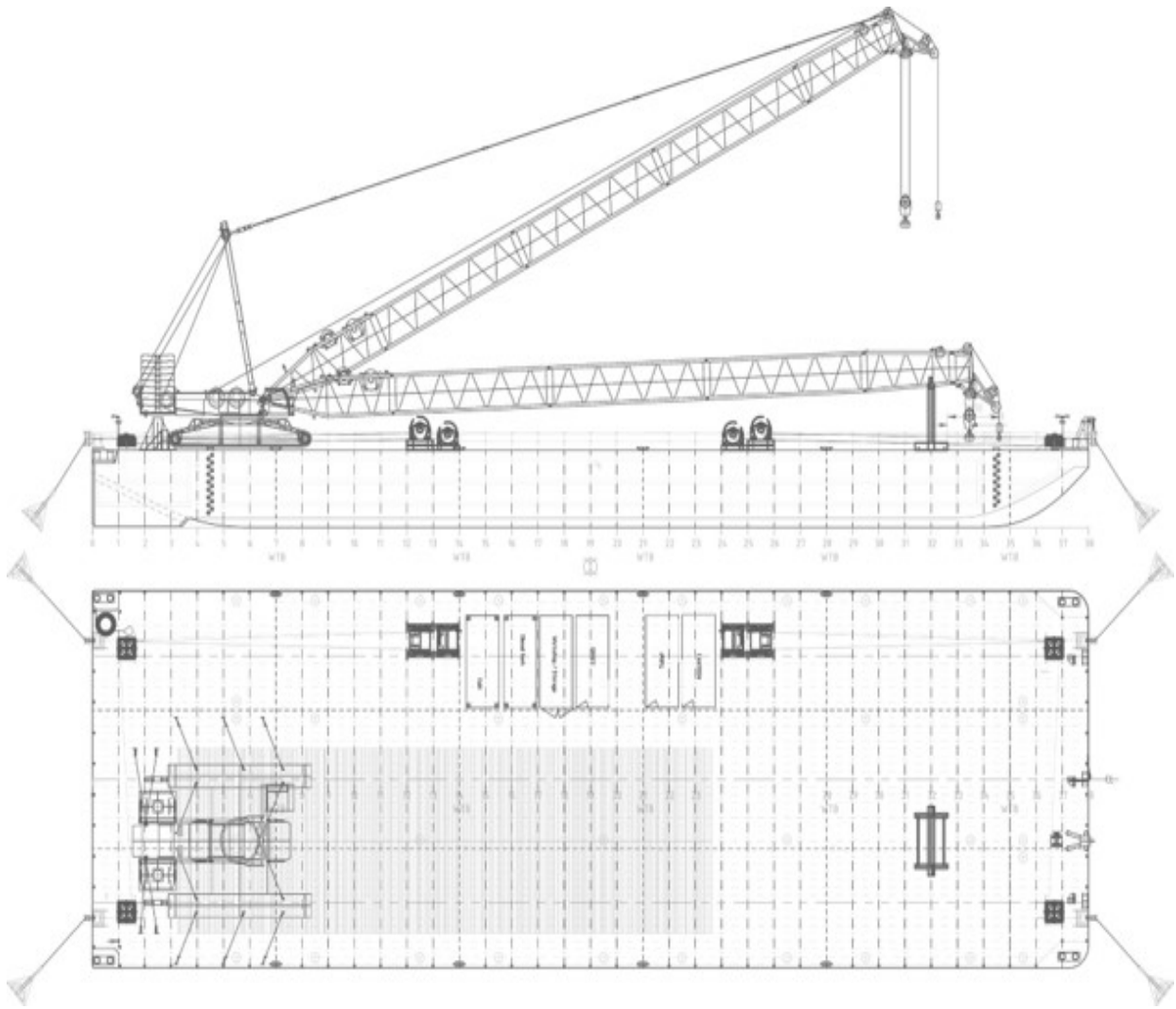


Neptune has got various vessels and pontoons available for sale or charter. To fulfil your operational demands, Neptune offers a wide range of deck equipment, including accommodation units, mooring equipment and cranes.



CLASSIFICATION	ABS + A1 BARGE
DIMENSIONS	
LENGTH O.A.	76,00 meters
BREADTH MLD.	24,50 meters
DEPTH AT SIDE	5,00 meters
MAX. DRAUGHT	3,99 meters
GROSS TONNAGE	2406 tons
NET TONNAGE	721 tons
CONSTRUCTION	
DECK PLATE THICKNESS	18 mm
SHEERSTRAKE THICKNESS	16 mm

CAPACITY	
CARGO CAPACITY	5500 tons
DECK LOAD	20 tons m ²
STANDARD OUTFITTING	
BOLLARDS	64 mt SWL on each corner
MANHOLES	Quick release manholes- recessed/ flush type
TOWING BRACKETS	64 mm SMIT brackets- 100 mt SWL
OPTIONS	
TOWING ARRANGEMENT	Bridle retrieval hand winch and A-Frame
DECK EQUIPMENT	Accommodation units, mooring units and cranes



EuroPontoon 7625 | Pontoon

For more information, please contact us on:

T +31 (0)184 621 423 E info@neptunmarine.com W www.neptunmarine.com

Version: V.01

