

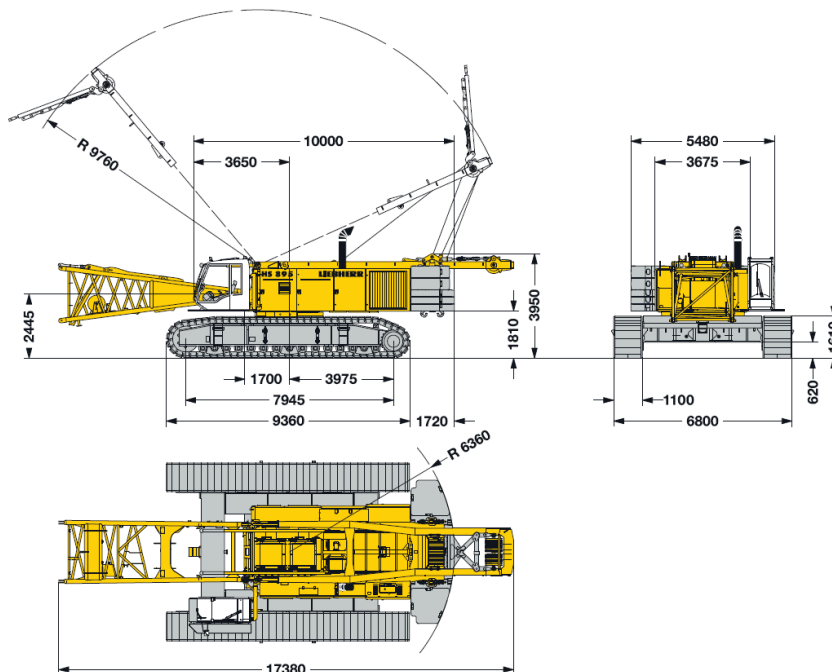


## Liebherr HS 895 HD | Crawler crane



The Liebherr HS 895 HD and its wide range of attachments mean that the range of use of the Liebherr HS 895 HD crawler crane is almost unlimited. Neptune Marine offers turnkey crawler cranes, available for charter on various pontoons.

INFORMATION	
BRAND	Liebherr
TYPE	HS 895 HD
BOOM LENGTH	20 - 84,20 meters
AUXILIARY JIB	Runner 35 Tons
WINCHES	2x (rope Ø 36 mm) + 1x aux
LINE PULL	2x 35 Tons + 1x 7 Tons
ENGINE	MAN D2842 LE 670 kW ( 898 HP )
OPERATING WEIGHT	+/- 210 Tons
FEATURES	
A/C	Yes
SELF-ERECT	Yes
FREE-FALL ON WINCHES	Yes + synchro
CAMERA	Yes
TRACKS	Flat pads tractor type 1100 mm



Capacities in metric tons for boom lengths (20 m - 84.2 m) - with 350 kN winches

Radius (m)	Boom length (m)															Radius (m)				
	20	25.7	28.7	34.7	37.4	43.4	46.4	49.1	52.1	55.1	58.1	60.8	63.8	66.8	69.8		72.5	75.5	78.5*	84.2*
5	t	t	t	t	t	t	t	t	t	t	t	t	t	t	t	t	t	t	t	t
6	200.0	192.7	197.1	194.4																
7	179.6	168.3	162.3	151.3	146.9															
8	152.9	143.8	139.3	130.9	127.3	120.1	116.7	111.1												
9	132.3	125.2	121.6	115.0	112.4	104.2	103.5	101.1	98.5	93.9	88.2									
10	116.2	110.8	107.8	102.4	100.2	95.4	93.1	90.9	88.7	86.6	83.8	73.1	68.7	64.5						
12	89.2	89.4	87.6	83.7	82.2	78.6	76.8	75.4	73.5	72.0	70.4	66.6	62.5	58.7	55.3	50.6	47.3	49.8	41.3	12
14	72.0	72.2	72.1	70.4	69.3	66.5	65.1	64.0	62.7	61.4	59.9	58.9	57.7	53.8	50.5	46.3	43.2	47.2	39.8	14
16	60.0	60.2	60.1	59.8	59.7	57.4	56.2	55.3	54.2	53.2	52.1	51.1	50.0	49.0	47.1	43.3	40.1	45.2	38.5	16
18	51.1	51.4	51.2	50.9	50.9	50.2	49.2	48.5	47.5	46.6	45.7	45.0	43.9	43.0	42.1	40.9	37.8	39.7	37.5	18
20	44.3	44.6	44.5	44.1	44.1	43.7	43.5	43.0	42.1	41.3	40.5	39.9	39.1	38.2	37.3	36.7	35.7	35.4	33.8	20
22		39.2	39.1	38.8	38.8	38.4	38.1	38.0	37.7	37.0	36.2	35.6	34.9	34.2	33.5	32.7	32.0	31.5	30.3	22
24		34.8	34.7	34.4	34.4	34.0	33.7	33.7	33.4	33.2	32.6	32.1	31.4	30.7	30.0	29.4	28.7	28.2	27.1	24
26		31.1	31.1	30.8	30.8	30.4	30.1	30.0	29.8	29.6	29.3	29.0	28.4	27.8	27.1	26.7	25.9	25.4	24.4	26
28			28.0	27.8	27.8	27.3	27.1	27.0	26.7	26.5	26.2	26.1	25.8	25.2	24.6	24.1	23.6	23.0	22.0	28
30			25.3	25.1	25.2	24.8	24.5	24.4	24.1	23.9	23.6	23.5	23.2	22.9	22.3	21.9	21.4	20.8	19.9	30
32				22.9	22.9	22.5	22.2	22.2	21.9	21.7	21.4	21.3	21.0	20.7	20.4	20.0	19.5	18.9	18.0	32
34				20.9	20.9	20.5	20.3	20.2	19.9	19.7	19.4	19.3	19.0	18.8	18.5	18.3	17.7	17.2	16.3	34
36					19.2	18.8	18.5	18.5	18.2	18.0	17.7	17.6	17.3	17.0	16.7	16.6	16.2	15.7	14.8	36
38					17.6	17.3	17.0	16.9	16.7	16.4	16.2	16.0	15.7	15.5	15.2	15.0	14.8	14.3	13.5	38
40						15.9	15.6	15.6	15.3	15.1	14.8	14.7	14.4	14.1	13.8	13.7	13.4	13.1	12.3	40
42						14.6	14.4	14.3	14.1	13.8	13.5	13.4	13.1	12.9	12.6	12.4	12.1	11.9	11.1	42
44						13.4	13.2	13.2	12.9	12.7	12.4	12.3	12.0	11.8	11.5	11.3	11.0	10.8	10.1	44
46							12.2	12.2	11.9	11.7	11.4	11.3	11.0	10.8	10.5	10.3	10.0	9.7	9.2	46
48								11.2	11.0	10.8	10.5	10.4	10.1	9.8	9.5	9.4	9.1	8.8	8.3	48
50									10.1	9.9	9.6	9.5	9.2	9.0	8.7	8.5	8.2	8.0	7.5	50
55										8.0	7.7	7.6	7.4	7.1	6.8	6.7	6.4	6.1	5.6	55
60												6.1	5.8	5.6	5.3	5.1	4.9	4.6	4.1	60
65														4.2	4.0	3.8	3.6	3.3	2.8	65
70																2.7	2.4	2.2	1.7	70
75																	1.4	1.2	1.7	75

TLT 901017914 - M 00000

# Liebherr HS 895 HD | Crawler crane

For more information, please contact us on:

T +31 (0)184 621 423 E info@neptunemarine.com W www.neptunemarine.com

Version: V.01

