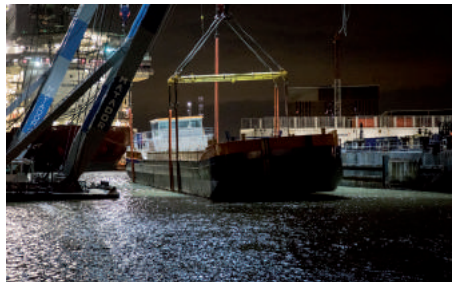




## Werkendam | Dredging crane vessel

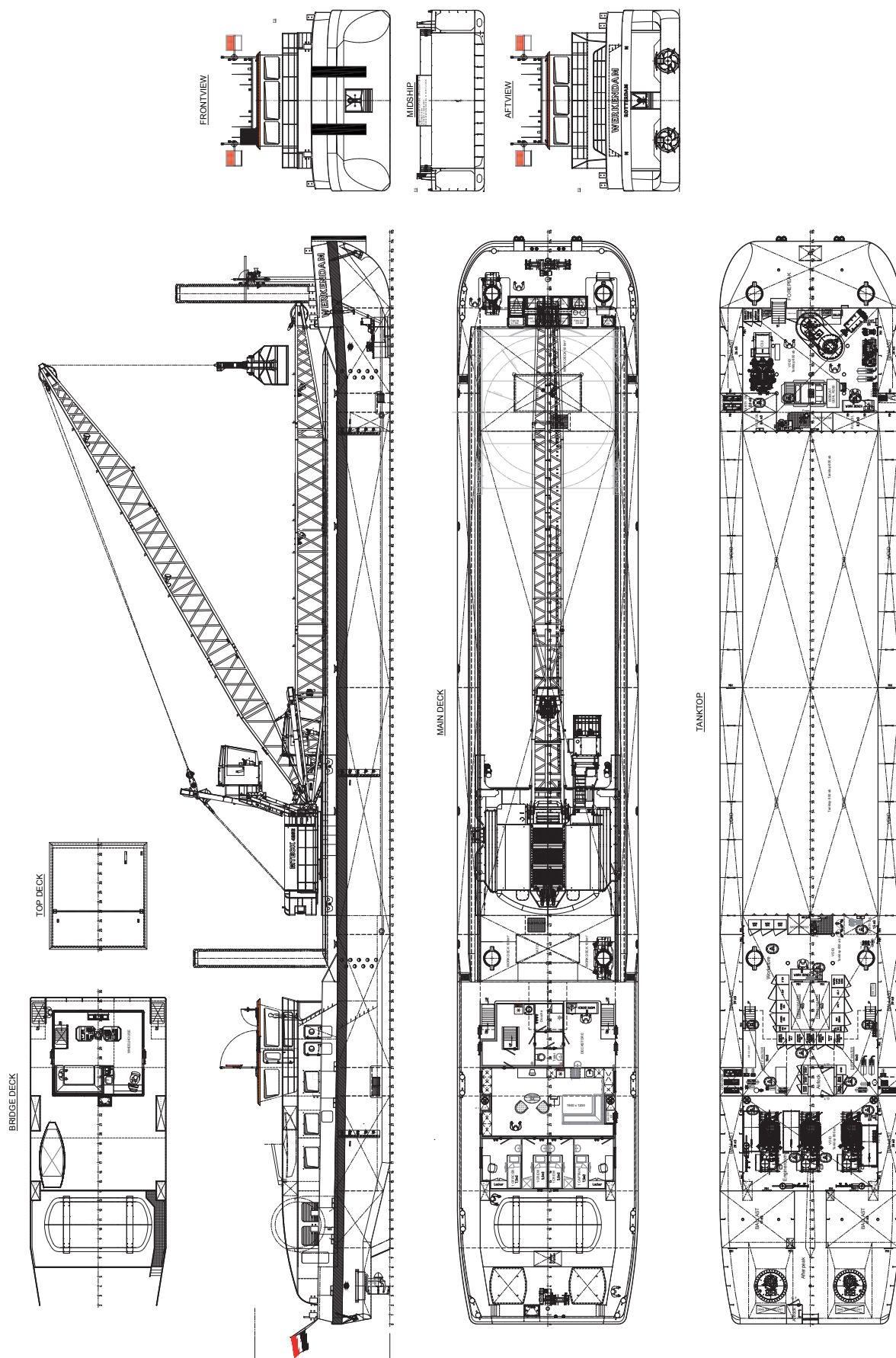


Neptune has built the “Werkendam” the first LNG Dredging crane vessel. As result, a vessel that conforms to all operational demands of the client as where durability into the smallest detail has been implemented and additional meets all the requirements of the new LNG legislation.



<b>CLASSIFICATION</b>	Bureau Veritas I 5 Z $\nabla$ HULL • MC Hopper dredger / Gas fuel -1R-DGD
<b>DIMENSIONS</b>	
LENGTH O.A.	68,40 meters
BREADTH MLD.	11,40 meters
DEPTH AT SIDE	3,30 meters
DRAFT	2,50 meters
CARGO HOLD CAPACITY	700 m <sup>3</sup>
<b>PERFORMANCES</b>	
SPEED	10 knots (approx.)
<b>PROPULSION</b>	
MAIN ENGINES	2x Veth VL-550 (electrical driven)
BOW THRUSTER	1x Veth steering grid
<b>AUXILIARIES</b>	
GENERATOR SETS	3x Man Rollo 476 Kw LNG driven 1x Caterpillar C32 diesel driven 1x Caterpillar C4.4 diesel driven
TOTAL POWER	2300 kW

<b>TANKS</b>	
LIQUID NATURAL GAS	37 m <sup>3</sup>
FRESH WATER	82,2 m <sup>3</sup>
<b>DECK LAY-OUT</b>	
DECK CRANE	Mteck 425e 20t at 20 m dredging Electric driven
SPUD POLES	2x 22+8 meter
	Boll rack and pinion system
<b>ACCOMMODATION</b>	
FACILITIES	Air-conditioned accommodation for up to 4 crew members in single cabins.



## Werkendam | Dredging crane vessel

For more information, please contact us on:

T +31 (0)184 621 423 E [info@neptunemarine.com](mailto:info@neptunemarine.com) W [www.neptunemarine.com](http://www.neptunemarine.com)

