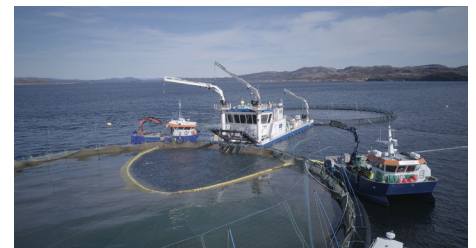




## EuroSpecialPurposePontoon 3511 | Aquaculture Support

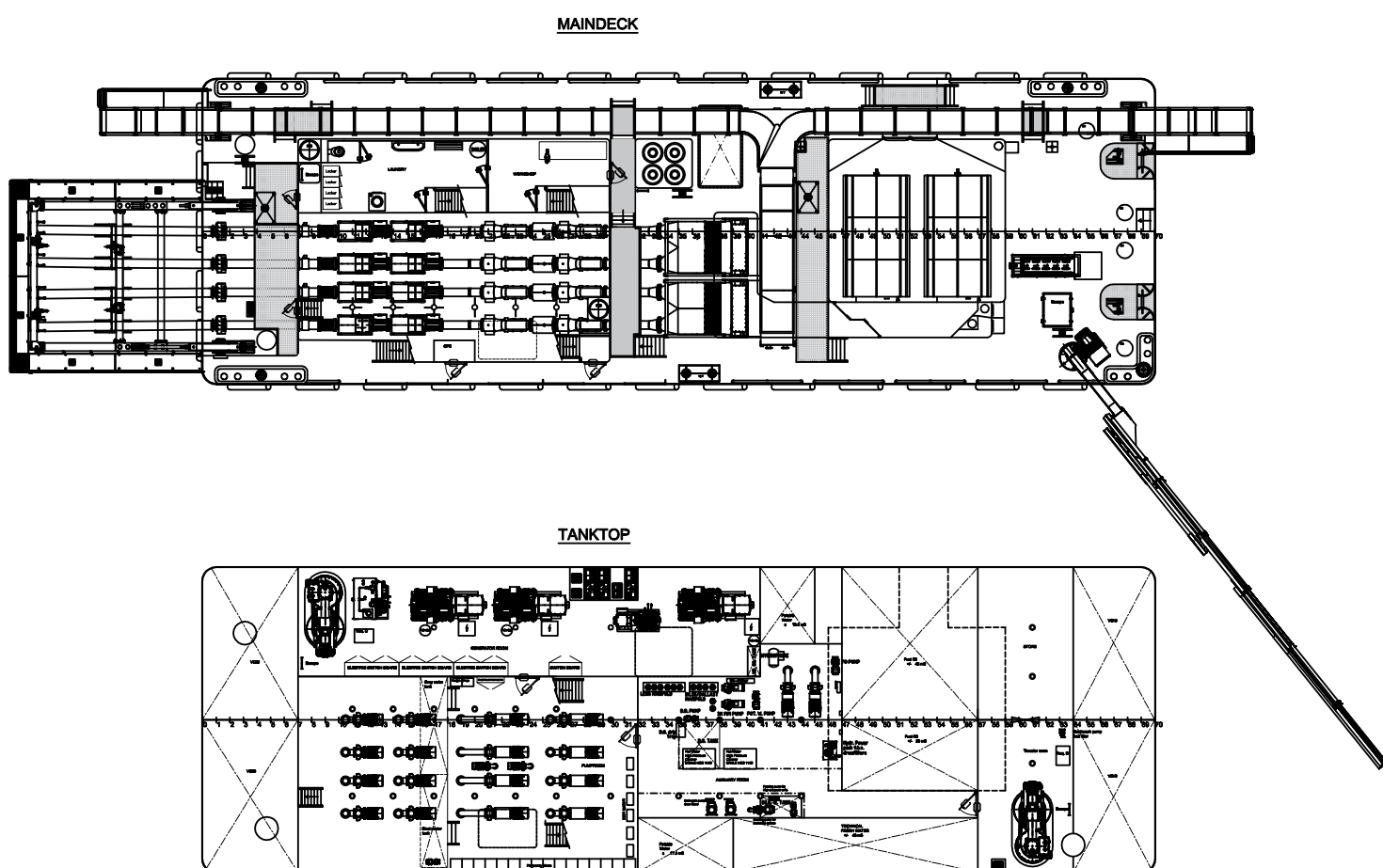
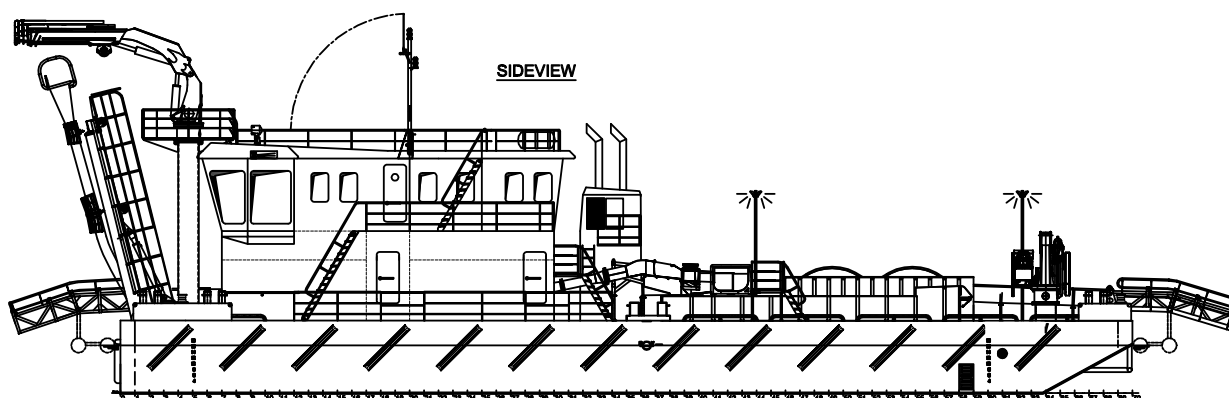


This type of EuroPontoon is designed to meet the requirements of modern aquaculture. Through the integration of a Hydrolicer delousing system, the ESPP enables your aquaculture business to deal with the challenges of tomorrow.



<b>CLASSIFICATIONS</b>	Bureau Veritas I ✕ HULL • MACH
<b>DIMENSIONS</b>	
LENGTH O.A.	35,00 meters
BREADTH MLD.	11,20 meters
DEPTH AT SIDE	2,50 meters
MAX. DRAUGHT	1,40 meters
GROSS TONNAGE	388 tons (approx.)
NET TONNAGE	116 tons (approx.)
<b>AUXILIARIES</b>	
GENERATOR SETS	3x Scania DI-16 75M
TOTAL POWER	3x 480 kW
HARBOUR SET	57 kW
<b>DECK EQUIPMENT</b>	
DECK CRANE	3x HS Marine 48-AK 1.8-E5
MAX. REACH	18,55 meters
MAX. CAPACITY	48 t/m
WINCH CAPACITY	2 tonnes
A-FRAME	Hydraulic driven including 4 x 2 tons hose-lifting winches
CAPSTANS	4x capstans (3 tons)

<b>FACILITIES</b>	
CONTROL ROOM	Optimized sight lines for fish farm operations
ACCOMMODATION	Air-conditioned single bed cabins for 4 persons
<b>HYDROLICER SYSTEM</b>	
NUMBER OF LINES	4-Line system
FISH DROP	Return to same pen To next pen with dismountable slides
<b>OPTIONAL ITEMS</b>	
THRUSTERS (ASSISTANT PROPULSION)	2x Veth Steering grid type VSG-1000L, 2 x 250 kW



## EuroSpecialPurposePontoon 3511 | Aquaculture support

For more information, please contact us on:

T +31 (0)184 621 423 E [info@neptunemarine.com](mailto:info@neptunemarine.com) W [www.neptunemarine.com](http://www.neptunemarine.com)

Version: V.01

