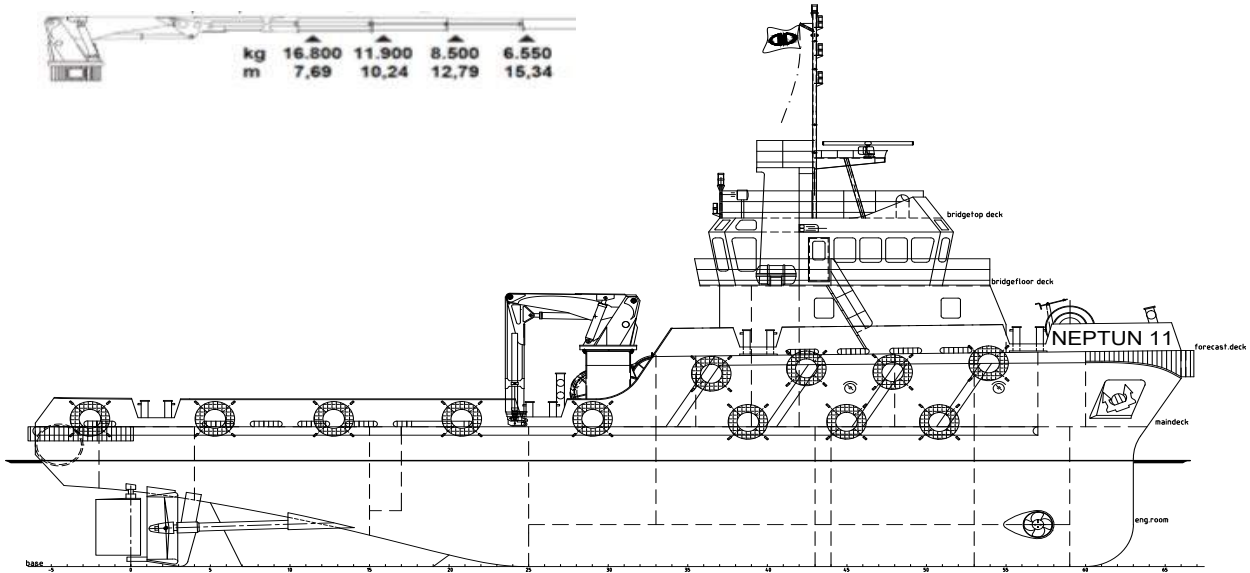




# Neptun 11 | Anchor Handling Tug / Utility Vessel



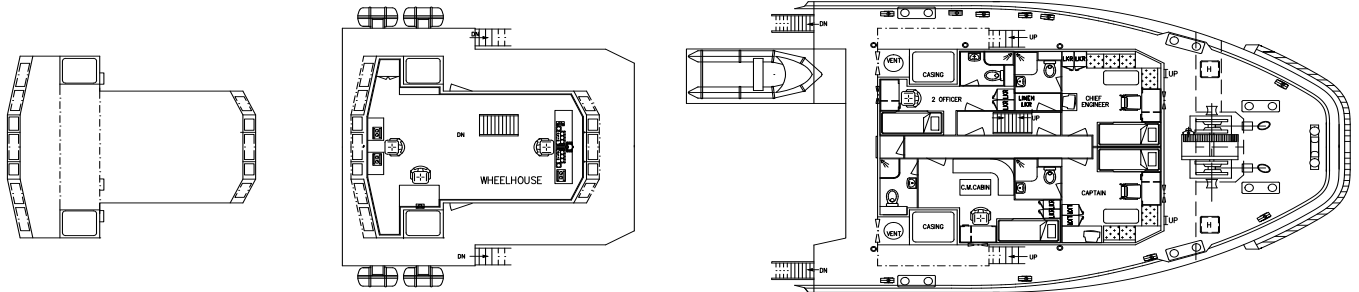
<b>CLASSIFICATIONS</b>	Bureau Veritas   HULL MACH AUT UMS Unrestricted Navigation	<b>MACHINERY / PERFORMANCES</b>	
<b>GENERAL</b>		BOLLARD PULL	42,8 tons
FLAG	U.K. Gibraltar	MAX. SPEED	12,0 knots
<b>DIMENSIONS</b>		SAILING RADIUS WITHOUT TOW	14.000 miles
LENGTH O.A..	36,00 meters	SAILING RADIUS WITH TOW	7.000 miles
BEAM / WIDTH.	10,40 meters	MAIN ENGINES	2x Cummins KTA-50-M2
DEPTH AT SIDES	5,00 meters	TOTAL OUTPUT	2.388 kW = 3.244 BHP
DRAFT (MIN. - MAX.)	3,80 - 4,15 meters	PROPULSION	Twin fixed propellers in nozzles
AIR DRAFT	17 meters	BOW THRUSTER	320 kW, van Ballegooy
GROSS TONNAGE	459 GT	GENERATOR SETS	2x Cummis AQM11-D(M) 1x Cummins 6CTA8.3-D(M)
NET TONNAGE	137 NT	GENERATOR POWER	2x 240 kW + 1x 136 kW / 400 V
DECK CARGO CAP.	6x 1 TEU, 90 tons	HYDRAULIC POWERPACK	ME HPU-090426 / 2x 30 kW
CLEAR DECK AREA	120 m <sup>2</sup>	<b>DECK EQUIPMENT</b>	
CARGO DECK LOAD	5 tons per m <sup>2</sup>	WINCH	ME Double Drum Waterfall
<b>TANK CAPACITIES / TRANSFER</b>		ANCHOR HANDLING	Pull Force 50T, Holding F. 100T
FUEL OIL / GASOIL	305.000 liters	TOWING DRUM	Pull Force 50T, Holding F. 100T
FRESH WATER	100.000 liters	TOW WIRES	2x 800 meters
FRESH WATER GENERATOR	2,5 m <sup>3</sup> / day	TOW WIRES DIAMETER	48 millimeters
TRANSFER OF FUEL OIL	50 m <sup>3</sup> / hr	TUGGERWINCH	5 tons
TRANSFER OF FRESH WATER	20 m <sup>3</sup> / hr	TOWING PINS	2x SWL 200 ton
<b>ACCOMODATION</b>		WIRE CATCHER	2x SWL 200 ton
FACILITIES	Airconditioned, 9 berths	STERN ROLLER	SWL 200 ton
		MAIN MARINE DECK CRANE	170 t/m
		MAXIMUM LIFT CAPACITY	See next page



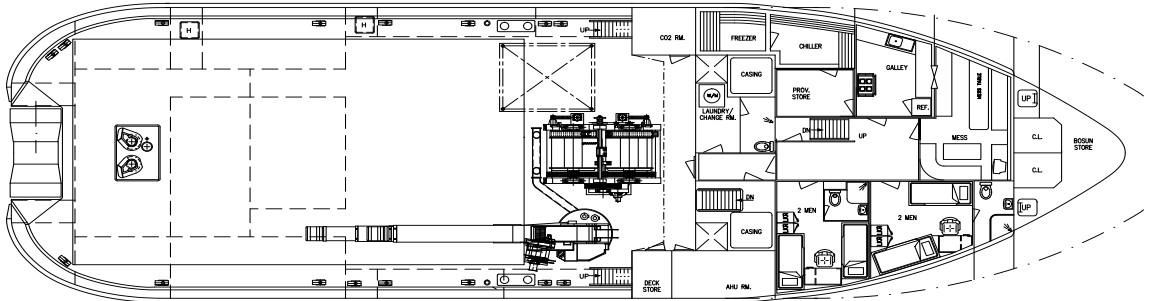
BRIDGETOPDECK

BRIDGEFLOORDECK

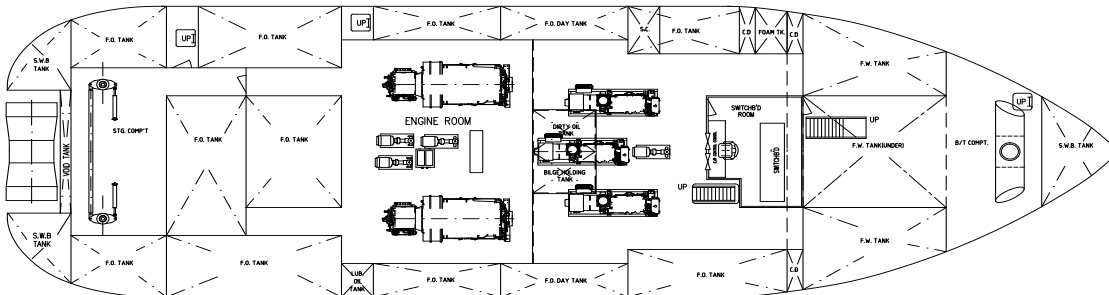
FORECASTLEDECK



MAINDECK



ENGINE ROOM



# Neptun 11 | Anchor Handling Tug / Utility Vessel

For other configurations, please contact us:

T +31 (0)184 621 423 E info@neptunmarine.com W www.neptunmarine.com

Version: V.02

