

# EuroPontoon 4013 | Pontoon

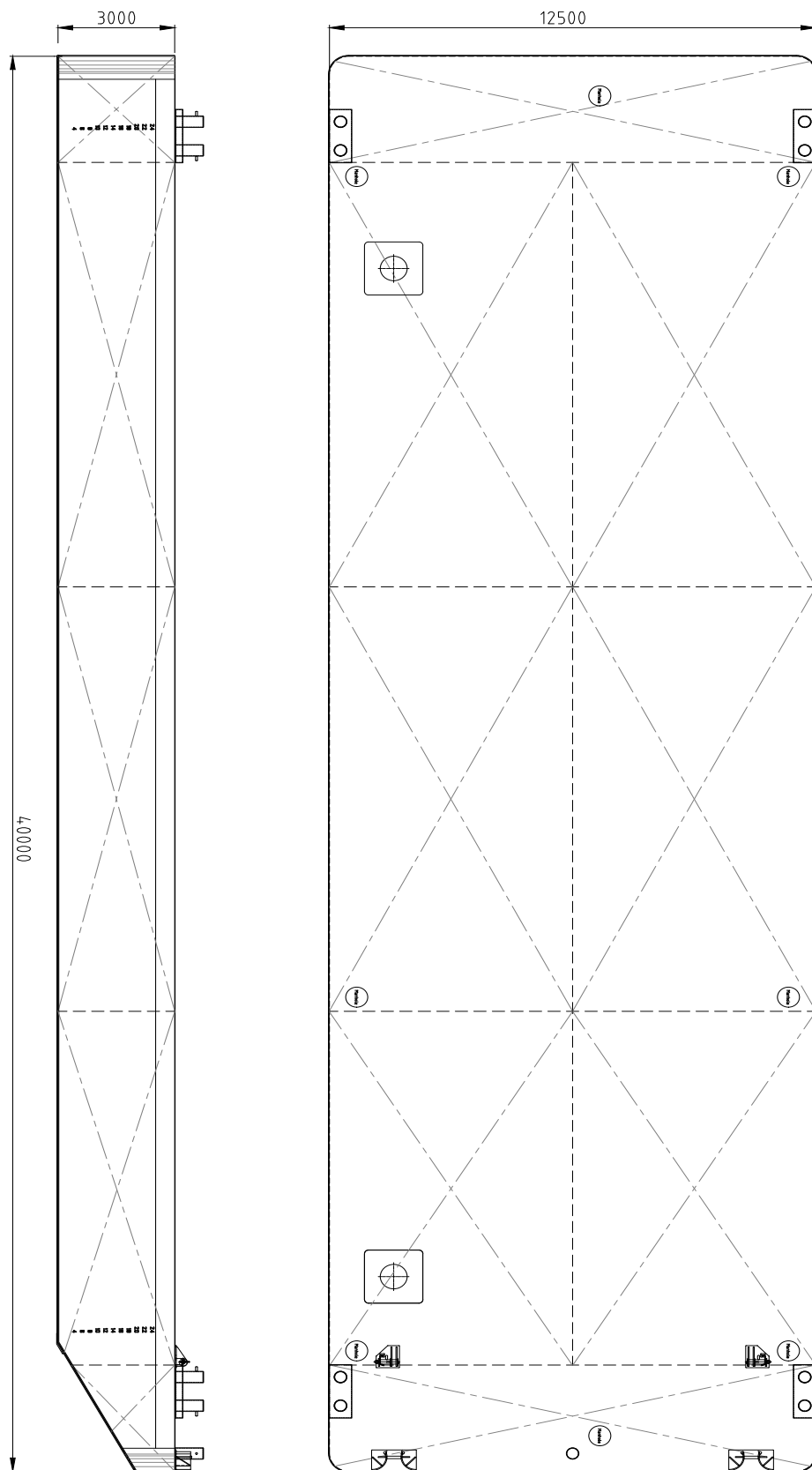


Neptune has got various vessels and pontoons available for sale or charter. To fulfil your operational demands, Neptune offers a wide range of deck equipment, including accommodation units, mooring equipment and cranes.



|                        |   |
|------------------------|---|
| <b>CLASSIFICATION</b>  | Bureau Veritas I  HULL<br>Unrestricted Navigation<br>Unmanned Towing |
| <b>DIMENSIONS</b>      |   |
| LENGTH O.A.            | 40,00 meters  |
| BREADTH MLD.           | 12,50 meters  |
| DEPTH AT SIDE          | 3,00 meters   |
| MIN. DRAUGHT           | 0,50 meters   |
| MAX. DRAUGHT           | 2,34 meters   |
| <b>CONSTRUCTION</b>    |   |
| DECK PLATE THICKNESS   | 10 mm   |
| SHEERSTRAKE THICKNESS  | 25 mm   |
| NUMBER OF COMPARTMENTS | 8 void spaces   |

|                            |  |
|----------------------------|--|
| <b>CAPACITY</b>            |  |
| CARGO CAPACITY             | Approx. 850 tons   |
| DECK LOAD                  | 10 tons m <sup>2</sup>                                     |
| <b>STANDARD OUTFITTING</b> |  |
| BOLLARDS                   | 4 x double bollards  |
| SPUD CANS                  | 2 x at SB side   |
| MANHOLES                   | Flush type manholes  |
| TOWING BRACKETS            | 2 x SMIT brackets at the bow                               |
| <b>OPTIONS</b>             |  |
| TOWING ARRANGEMENT         | Towing bridle with chains and emergency towing arrangement |
| SPUD POLES                 | Spuds with a diameter of 609mm                             |
| SPUD HANDLING EQUIPMENT    | Hydraulic cylinders  |
| DECK EQUIPMENT             | Mooring equipment and cranes                               |



## EuroPontoon 4013 | Pontoon

For more information, please contact us on:

T +31 (0)184 621 423 E [info@neptunemarine.com](mailto:info@neptunemarine.com) W [www.neptunemarine.com](http://www.neptunemarine.com)

Version: V.01

