



# EuroTug 1306 | Tugboat

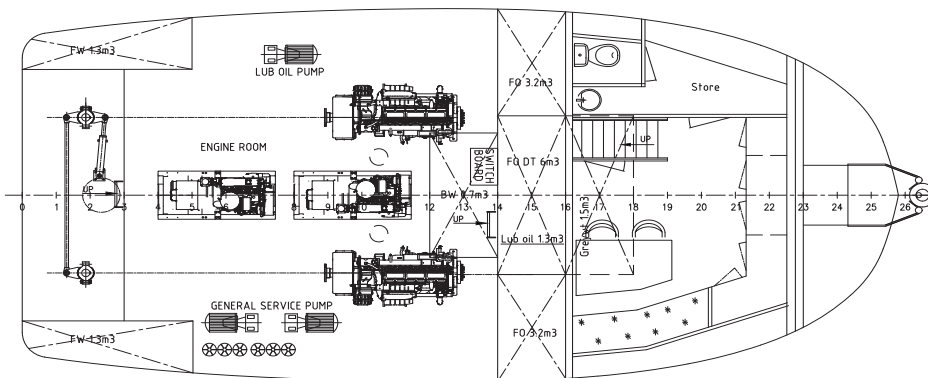
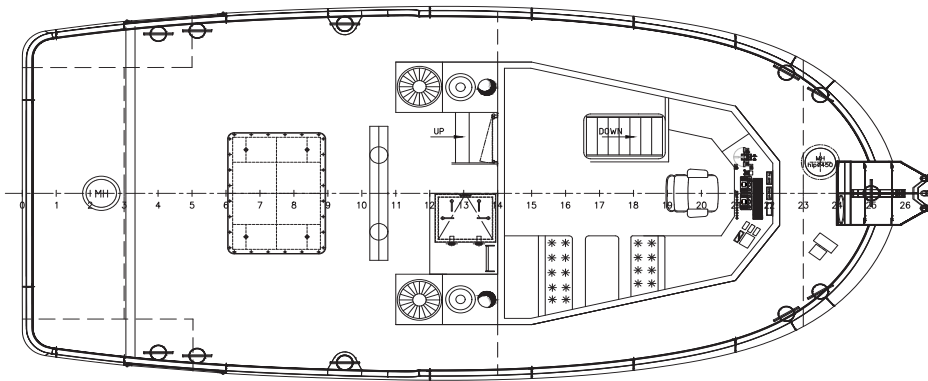
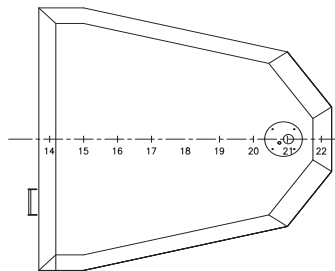
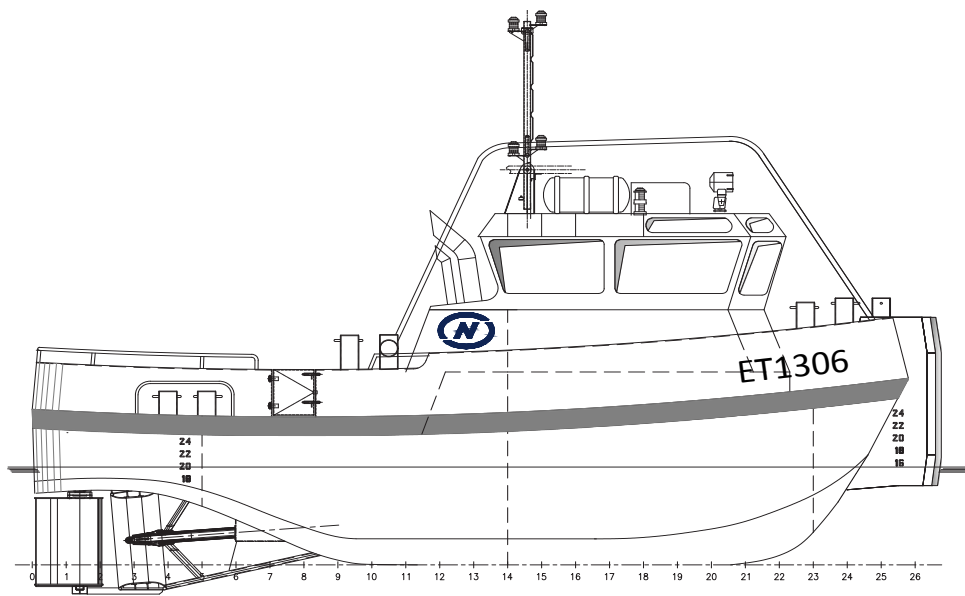


EuroTugs have proven their versatility and robustness at sea, over the years. The maximum free deck space for this type of multipurpose tugboat offers many possibilities for all kinds of operations including towing, anchor handling, dredging support and wind farm support.



<b>CLASSIFICATION</b>	Bureau Veritas I  HULL • MACH • AUT-UMS, Coastal Area, Tug, GMDSS Area A1
<b>DIMENSIONS</b>	
LENGTH O.A.	13,50 meters
BREADTH MLD.	6,00 meters
DEPTH AT SIDE	2,50 meters
DRAFT	1,85 meters
<b>PERFORMANCES</b>	
SPEED	9 knots
BOLLARD PULL	10 tons
<b>PROPULSION</b>	
MAIN ENGINES	2x Caterpillar C12.
TOTAL POWER	2x 385 hp at 1800 RPM
PROPELLERS	1350 mm in nozzle
<b>AUXILIARIES</b>	
ELECTRICAL SYSTEM	24 Volt
AC UNIT COMPRESSOR	Electrical driven by generator

<b>TANKS</b>	
FUEL OIL	12,5 m <sup>3</sup>
FRESH WATER	2,6 m <sup>3</sup>
<b>DECK LAY-OUT</b>	
TOWING HOOK	Mampaey 20 tons SWL Disc
FENDERING	Rubber lamella fendering on the side, pushbow fendering fore ship
<b>ACCOMMODATION</b>	
FACILITIES	Air-conditioned mess and bridge
<b>OPTIONS</b>	
DECK CRANE	10 tonmeter
TUGGER WINCH	10 tons SWL
TOWING PINS	Manual type



## EuroTug 1306 | Tugboat

For more information, please contact us on:

T +31 (0)184 621 423 E [info@neptunemarine.com](mailto:info@neptunemarine.com) W [www.neptunemarine.com](http://www.neptunemarine.com)

Version: V.01

