

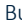


EuroTug 2308 | Tugboat



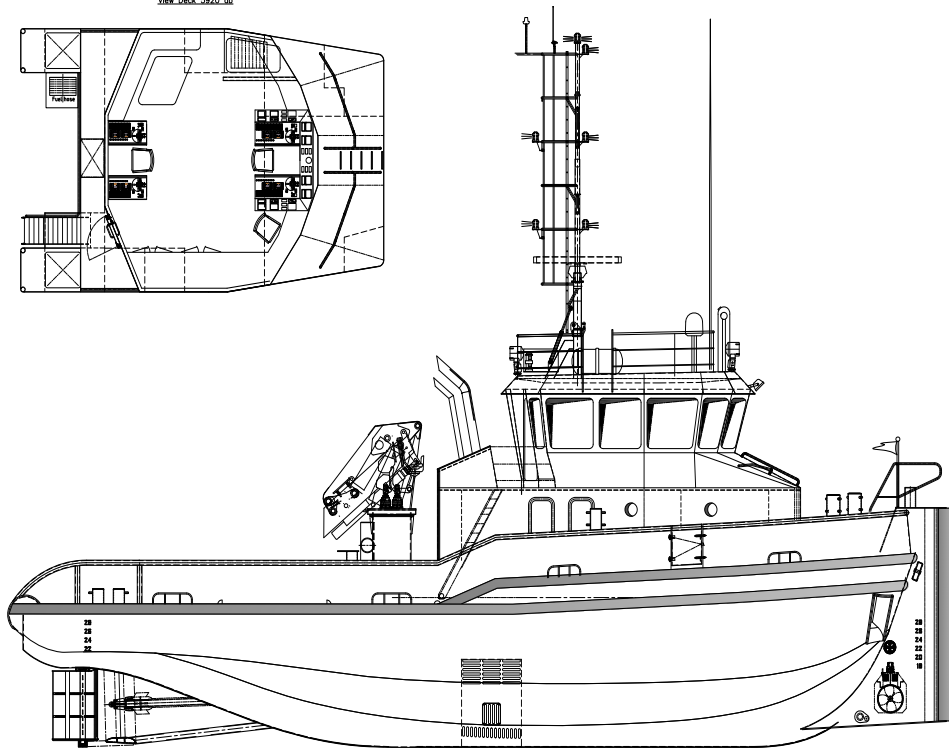
Euro Tugs have proven their versatility and robustness at sea, over the years. The maximum free deck space for this type of multipurpose tugboat offers many possibilities for all kinds of operations including towing, anchor handling, dredging support and wind farm support.



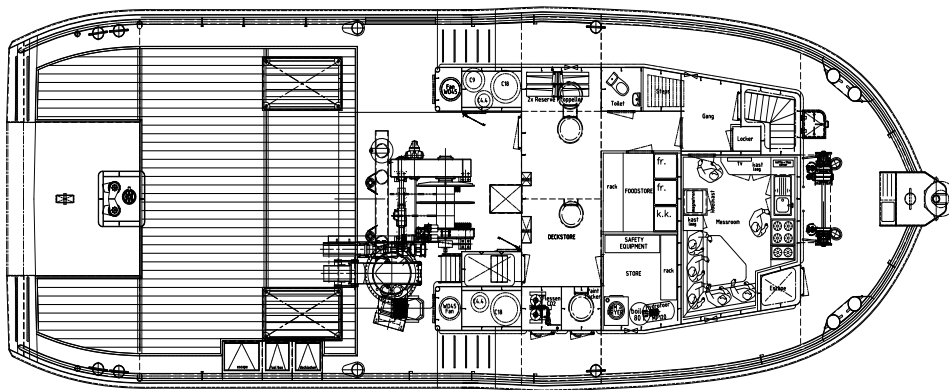
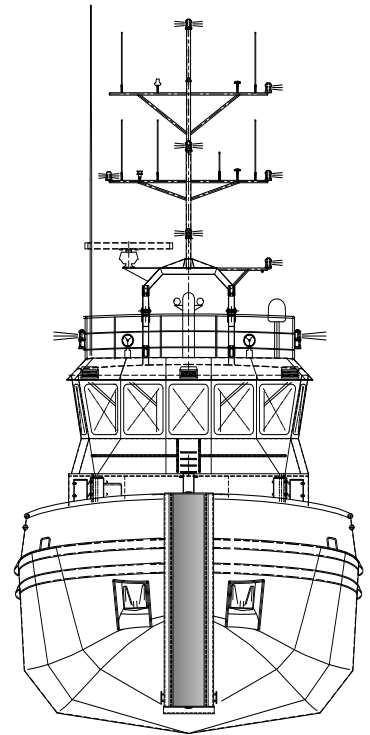
CLASSIFICATION	Bureau Veritas I  HULL • MACH • AUT-UMS, TUG, Unrestricted Navigation, GMDSS Area A2
DIMENSIONS	
LENGTH O.A.	23,68 meters
BREADTH MLD.	8,50 meters
DEPTH AT SIDE	3,25 meters
DRAFT	2,65 meters
GROSS TONNAGE	135
NET TONNAGE	40
PERFORMANCES	
SPEED	10 knots
BOLLARD PULL	14,0 tons
PROPULSION	
MAIN ENGINES	2x Caterpillar C18
TOTAL POWER	714 kW at 1800 RPM
PROPELLERS	1500 mm in nozzle
AUXILIARIES	
GENERATOR SETS	2x Caterpillar C7.1
TOTAL E-POWER	236 kW
HYDRAULIC POWER PACK	2x 55 kW – Electrical driven

TANKS	
FUEL OIL	50 m ³
FRESH WATER	22 m ³
DECK LAY-OUT	
ANCHOR HANDLING / TOWING WINCH	60 ton split drum type
PULLING FORCE	50 ton at 1st layer
HAULING SPEED	5m/min – 15m/min
DECK	Azobé deck covering
TOWING HOOK	Mampaey 45 tons SWL Disc
FENDERING	Tire- and optional D-fendering on the side, pushbow fendering fore ship, D-fendering aft ship
ACCOMMODATION	
FACILITIES	Airconditioned accommodation for up to 6 persons.
OPTIONS	
DECK CRANE	Heila HLRM 65-4S
TUGGER WINCH	8 ton at 1 st layer
TOWING PINS	Aft ship set + chain stopper

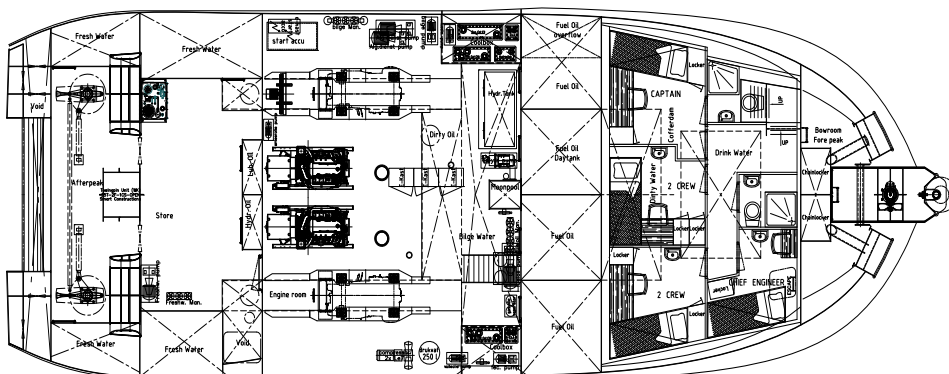
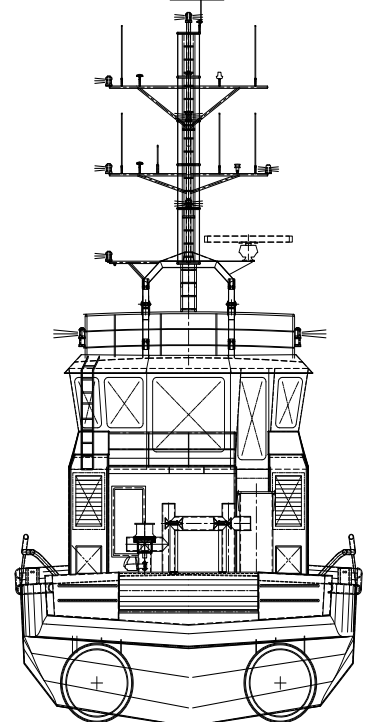
View Deck 5920.sh



FRONTVIEW



AFTVIEW



EuroTug 2308 | Tugboat

For more information, please contact us on:

T +31 (0)184 621 423 E info@neptunemarine.com W www.neptunemarine.com

Version: V.01