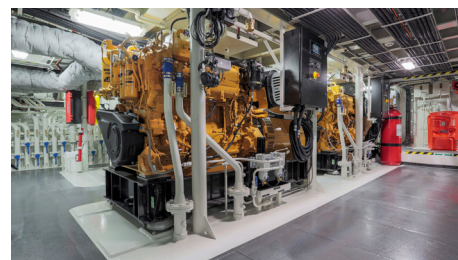





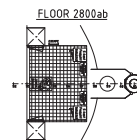
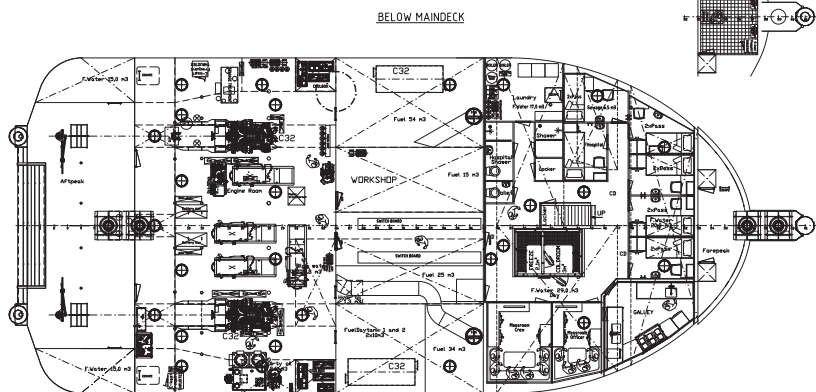
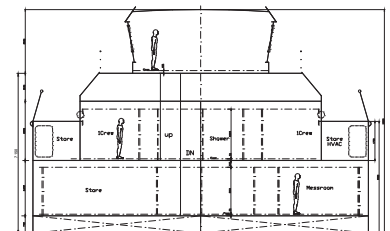
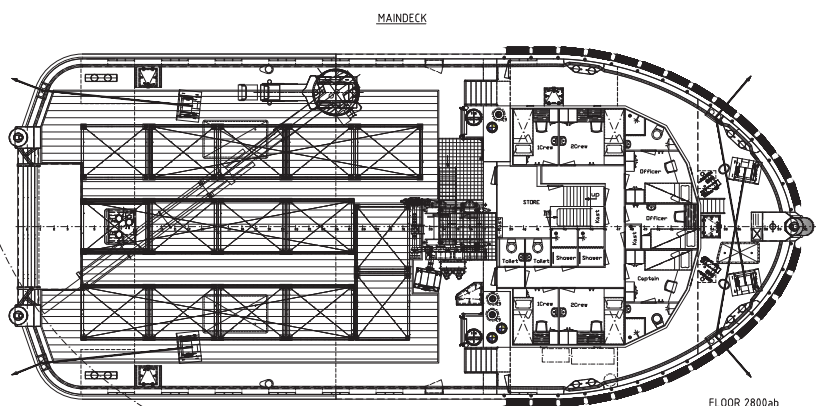
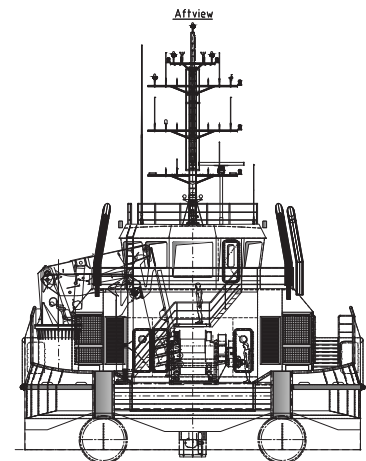
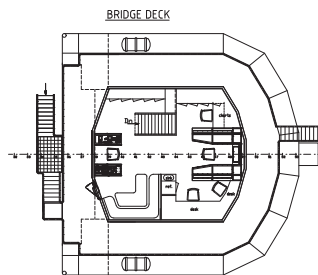
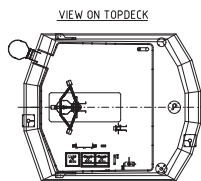
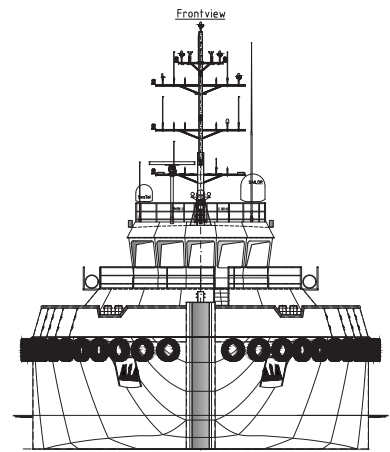
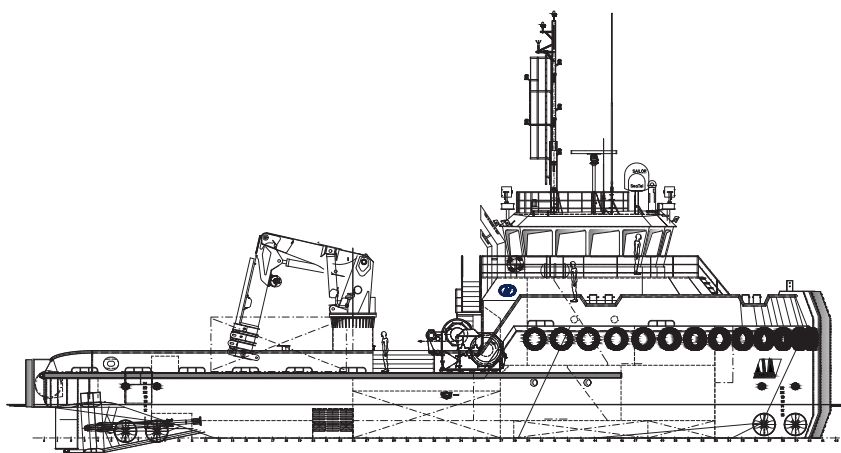
## EuroTug 3515 Hybrid | Shallow draft tugboat



Euro Tugs have proven their versatility and robustness at sea, over the years. The maximum free deck space for this type of multipurpose tugboat offers many possibilities for all kinds of operations including towing, anchor handling, dredging support and wind farm support.



<b>CLASSIFICATION</b>		Bureau Veritas I  HULL • MACH • AUT-UMS, TUG, Unrestricted Navigation, DYNAPOS AM/AT R, GMDSS Area A3
<b>DIMENSIONS</b>		
LENGTH O.A.	36,00 meters	
BREADTH MLD.	15,00 meters	
DEPTH AT SIDE	2,90 meters	
DRAFT	1,70 meters	
GROSS TONNAGE	498 tons	
NET TONNAGE	147 tons	
<b>PERFORMANCES</b>		
SPEED	12 knots	
BOLLARD PULL	approx. 35 tons	
<b>PROPULSION</b>		
MAIN ENGINES	2x Caterpillar C32 (970 kW)	
ELECTRIC DRIVES	2x electric motor (200 kW)	
TOTAL POWER	2340 kW at 1850 RPM	
PROPELLERS	1850 mm in nozzle	
<b>AUXILIARIES</b>		
GENERATOR SETS	4x Caterpillar C18 (436 kW) + 1x 150 kW	
TOTAL E-POWER	1894 kW	
HYDRAULIC POWER PACK	Electric driven	
THRUSTERS	2x 275 kW (bow) + 2x 275 kW (stern)	
<b>TANKS</b>		
FUEL OIL	135 m <sup>3</sup>	
FRESH WATER	91 m <sup>3</sup>	
<b>DECK LAY-OUT</b>		
ANCHOR HANDLING / TOWING WINCH	Waterfall winch type	
ANCHOR HANDLING	125 ton holding force	
PULLING FORCE	100 ton at 1st layer	
HAULING SPEED	5m/min- 10m/min	
TOWING WINCH	125 ton holding force	
PULLING FORCE	20 ton at 1st layer	
HAULING SPEED	10m/min- 20m/min	
DECK CRANE	Heila HLRM 230-4SL	
DECK	Azobé deck covering	
TOWING HOOK	Mampaey 50 tons SWL Disc	
FENDERING	Tire and optional D-fendering on the side, pushbow fendering fore ship, D-fendering aft ship	
<b>ACCOMMODATION</b>		
FACILITIES	Airconditioned accommodation for up to 21 persons	
<b>OPTIONS</b>		
TUGGER WINCH	15 ton at 1st layer	
TOWING PINS	Aft ship set + chain stopper	
MOORING SYSTEM	4-point mooring system	



## EuroTug 3515 Hybrid | Shallow draft tugboat

For more information, please contact us on:

T +31 (0)184 621 423 E [info@neptunemarine.com](mailto:info@neptunemarine.com) W [www.neptunemarine.com](http://www.neptunemarine.com)

Version: V.01

