

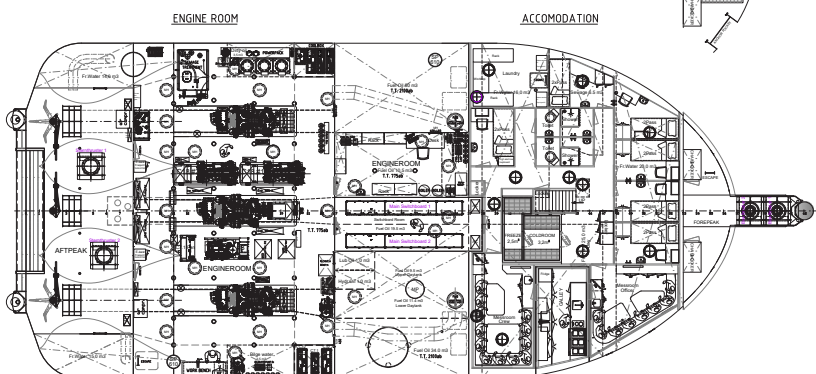
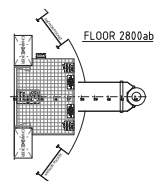
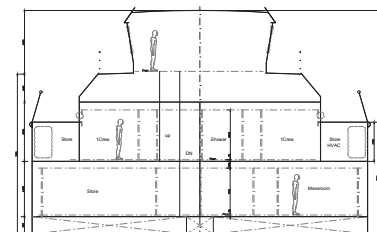
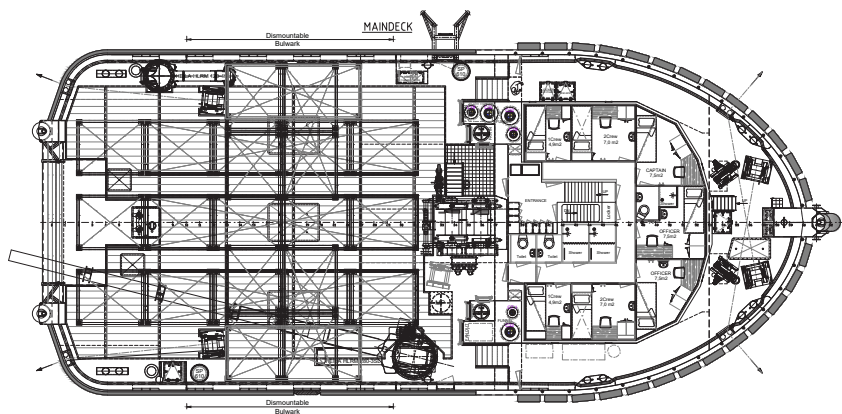
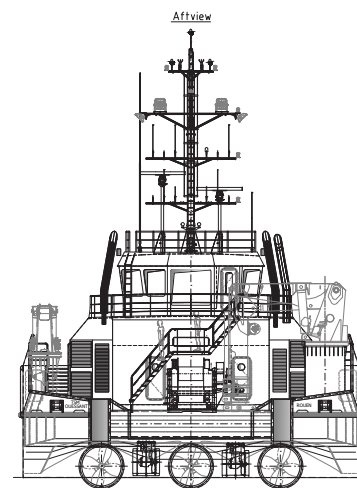
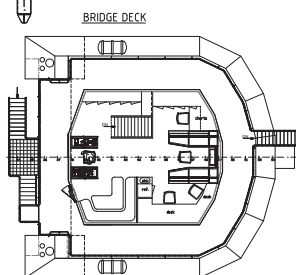
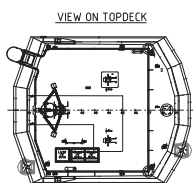
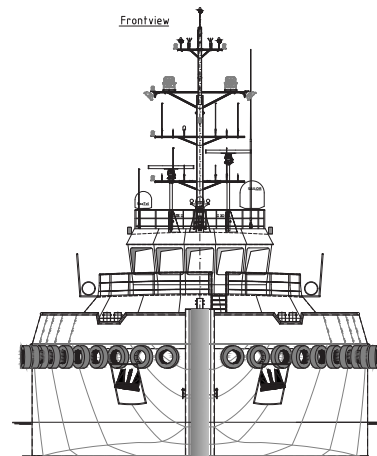
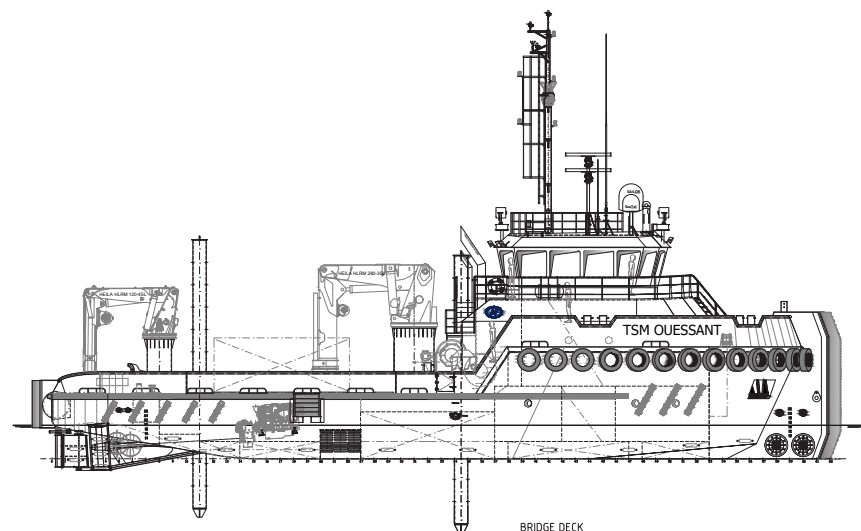


Euro Tugs have proven their versatility and robustness at sea, over the years. The maximum free deck space for this type of multipurpose tugboat offers many possibilities for all kinds of operations including towing, anchor handling, dredging support and wind farm support.



CLASSIFICATION		Bureau Veritas I ❏ HULL • MACH • AUT-UMS, TUG, Unrestricted Navigation, GMDSS Area A3, Cleanship, Green Passport, DYNAPOS AM / AT R	
DIMENSIONS			
LENGTH O.A.	36,00 meters		
BREADTH MLD.	15,00 meters		
DEPTH AT SIDE	2,90 meters		
DRAFT	1,70 meters		
GROSS TONNAGE	483		
NET TONNAGE	144		
PERFORMANCES			
SPEED	10 knots		
BOLLARD PULL	43 tons		
PROPULSION			
MAIN ENGINES	3x Caterpillar C32		
TOTAL POWER MAIN ENGINE	2910 kW at 1800 rpm		
PROPELLERS	1750 mm in nozzle		
AUXILIARIES			
GENERATOR SETS	2x Caterpillar C18 1x Caterpillar C7.1		
TOTAL E-POWER	1730 kW		
HYDRAULIC POWER PACK	3x 90 kW (electrical driven)		
BOW THRUSTERS	2 x 275 kW (electrical driven)		
STERN THRUSTERS	2 x 275 kW (electrical driven)		

TANKS	
FUEL OIL	135 m³
FRESH WATER	89 m³
DECK LAY-OUT	
ANCHOR HANDLING / TOWING WINCH	Waterfall winch type
ANCHOR HANDLING	120 ton holding force
PULLING FORCE	100 ton at 1 st layer
TOWING WINCH	100 ton holding force
PULLING FORCE	50 ton at 1 st layer
DECK CRANE	Heila HLRM 280-3SL
DECK CRANE	Heila HLRM 120-4SL
DECK	Wood deck covering
TOWING HOOK	Mampaey 65 tons SWL Disc
FENDERING	Tire-and optional D-fendering on the side, pusbow fendering fore ship, D-fendering aft ship and sides
ACCOMMODATION	
FACILITIES	Airconditioned accommodation for up to 21 persons
OPTIONS	
SPUD SYSTEM	2x 12 metres
MOORING SYSTEM	4-point mooring system



EuroTug 3515 | Shallow draft tugboat

For more information, please contact us on:

T +31 (0)184 621 423 E info@neptunemarine.com W www.neptunemarine.com

Version: V.02

