

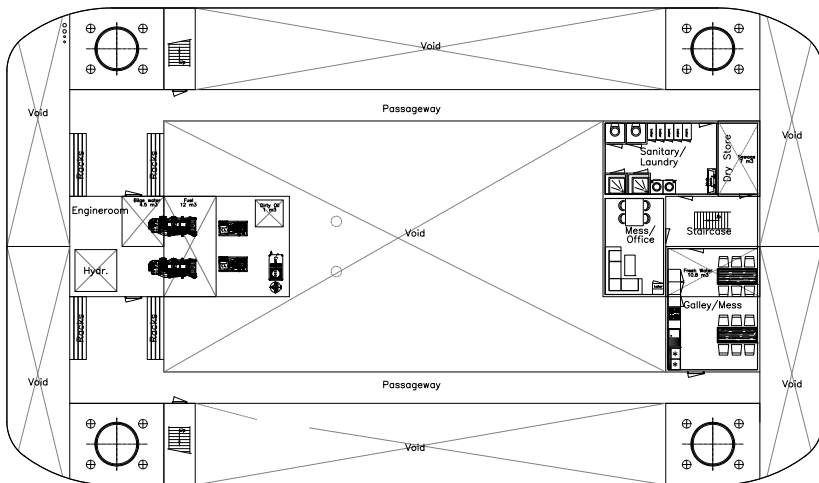
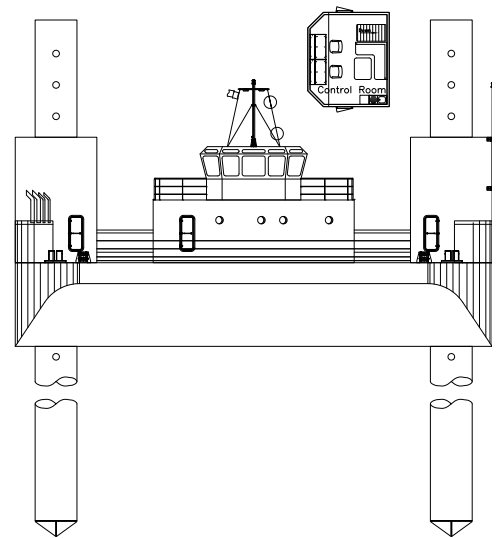
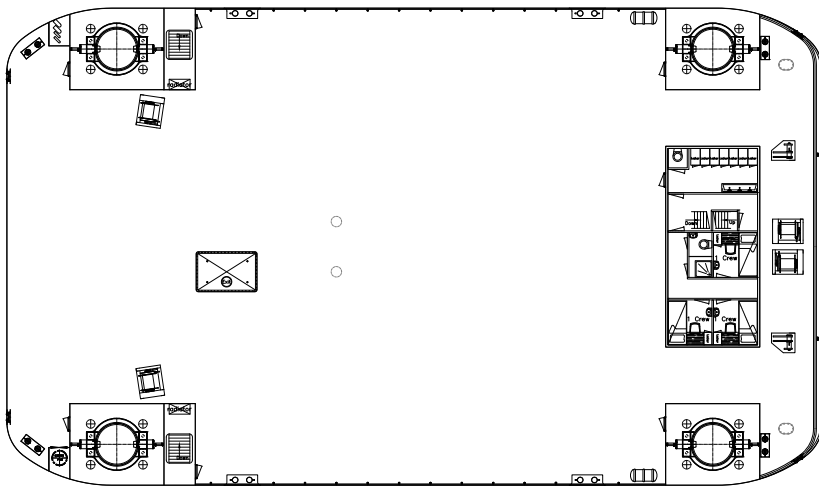
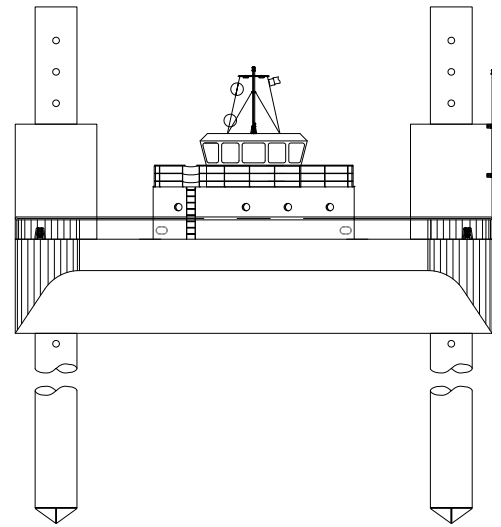
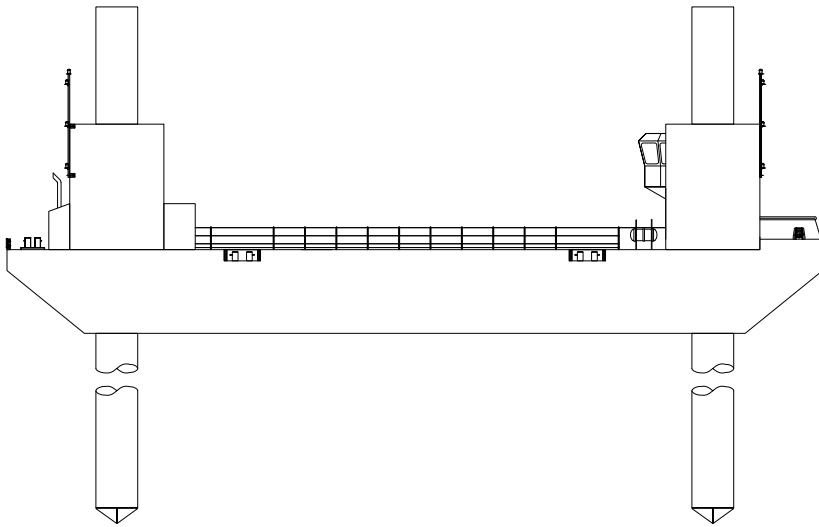


The EuroJack-Up is a multi-purpose jack-up barge design, which offers solutions to all kinds of maritime operations such as offshore construction. It can be modified to fit your demands. This could either be the installation of propulsion, or the installation of a heavy lift crane to fit your project.



<b>CLASSIFICATION</b>	Bureau Veritas I ✕ HULL • MACH Offshore Self Elevating Unit, Coastal Area, Transit over 20 miles from shore with HS < 2.5m
<b>DIMENSIONS</b>	
LENGTH O.A.	39,00 meters
BREADTH MLD.	22,80 meters
DEPTH AT SIDE	4,00 meters
DRAFT	3,00 meters
<b>OPERATING CONDITIONS</b>	
MAX. DESIGN WATER DEPTH	39,9 meters
<b>SPUD LEGS</b>	
LENGTH	41,60 meters (Extension 24,15 meters)
DIAMETER	2,00 meters
WEIGHT	110 Ton (Extension: 62 Ton)
SPUD CAN	Optional
<b>AUXILIARIES</b>	
GENERATOR SETS	2x Caterpillar C4.4
TOTAL E-POWER	142,4 kW
FIFI	Certified fifi system
JACK-UP	Single acting w/o freefall
<b>ACCOMMODATION</b>	

<b>CAPACITY</b>	
FRESH WATER	30,7 m <sup>3</sup>
FUEL OIL	14,4 m <sup>3</sup>
HYDRAULIC OIL	10,8 m <sup>3</sup>
<b>JACKING PARAMETERS</b>	
JACKING SPEED	15 m/hour
VARIABLE LOAD (PAYLOAD)	approx. 750 tons
PRELOAD FORCE PER LEG	750 tons
<b>PARAMETERS AT 30M DEPTH</b>	
CURRENT	1,5 m/sec
WIND VELOCITY(SURVIVAL)	16 m/sec (25 m/sec)
SIGNIF. WAVE HEIGHT (SURVIVAL)	3,0 meters (5,0 meters)
MAX. WAVE HEIGHT (SURVIVAL)	5,58 meters (9,30 meters)
<b>PARAMETERS AT 35M DEPTH</b>	
CURRENT	1,5 m/sec
WIND VELOCITY (SURVIVAL)	25 m/sec
SIGNIF. WAVE HEIGHT (SURVIVAL)	2,0 meters
MAX. WAVE HEIGHT (SURVIVAL)	3,72 meters
<b>OPTIONS</b>	
POSITIONING SYSTEM	4-point mooring system
ADDITIONAL ACCOMMODATION	Modular units



## EuroJack-Up 3923 | Jack-up barge

For more information, please contact us on:

T +31 (0)184 621 423 E [info@neptunemarine.com](mailto:info@neptunemarine.com) W [www.neptunemarine.com](http://www.neptunemarine.com)

Version: V.01

