


Neptune has got various vessels and pontoons available for sale or charter. To fulfil your operational demands, Neptune offers a wide range of deck equipment, including accommodation units, mooring equipment and cranes.

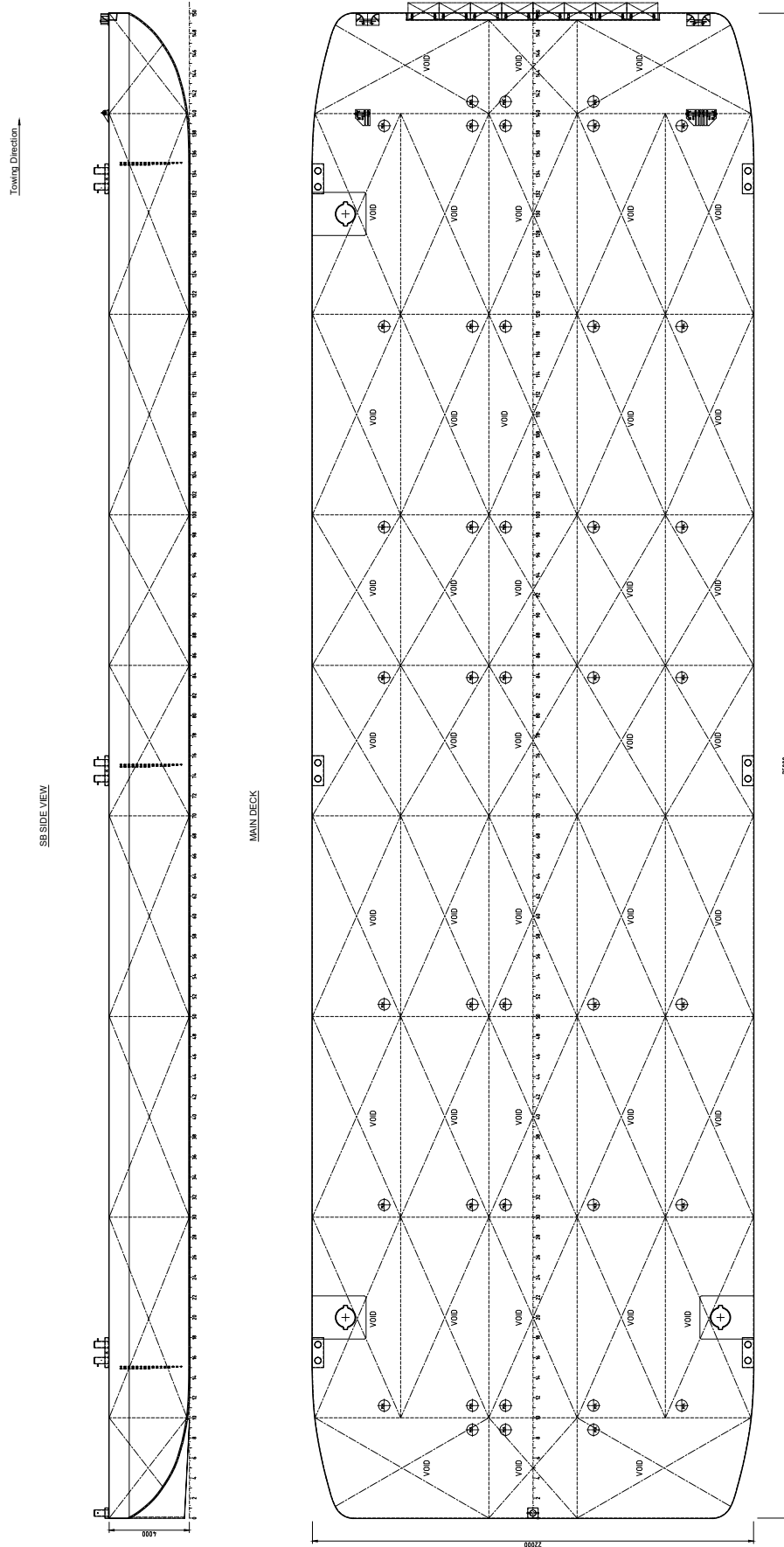


EuroPontoon 7522 | NP 639

GENERAL	
IMO NR.	N/A
CALL SIGN	N/A
YEAR BUILT	2024
HOME PORT	Aalst
CLASSIFICATION	Bureau Veritas  HULL Unrestricted Navigation Unmanned Towing

DIMENSIONS	
LENGTH O.A.	75,00 meter
BREADTH MLD.	22,00 meter
DEPTH AT SIDE	4,00 meter
DRAUGHT MAX	3,00 meter
DRAUGHT MIN	0,60 meter
CAPACITY	
GROSS TONNAGE	1747 ton
NET TONNAGE	523 ton
CARGO CAPACITY	3886 ton
DECK LOAD	20 ton m ²
CONSTRUCTION	
DECK PLATE THICKNESS	15 mm
SHEERSTRAKE THICKNESS	25 mm
NUMBER OF COMPARTMENTS	42 void spaces

STANDARD OUTFITTING	
BOLLARDS	6 x double bollards 1 x single bollard
MANHOLES	Flush type manholes
TOWING BRACKETS	3 x SMIT brackets at the bow
BOARDING LADDERS	Recessed ladders 2 x PS & 2 x SB
SPUD HOLES	2 x at PS side 1 x at SB side
RAMP	Ramp recess at the bow
OPTIONS	
TOWING ARRANGEMENT	Bridle retrieval hand winch and A-Frame
DECK EQUIPMENT	Accommodation units, mooring units and cranes.
SPUD POLES	Spuds with a diameter of 914 mm
SPUD HANDLING ARRANGEMENT	Hydraulic cylinders or winches



EuroPontoon 7522 | NP 639

For more information, please contact us on:

T +31 (0)184 621 423 E info@neptunemarine.com W www.neptunemarine.com

Version: V.02

