


Neptune has got various vessels and pontoons available for sale or charter. To fulfil your operational demands, Neptune offers a wide range of deck equipment, including accommodation units, mooring equipment and cranes.

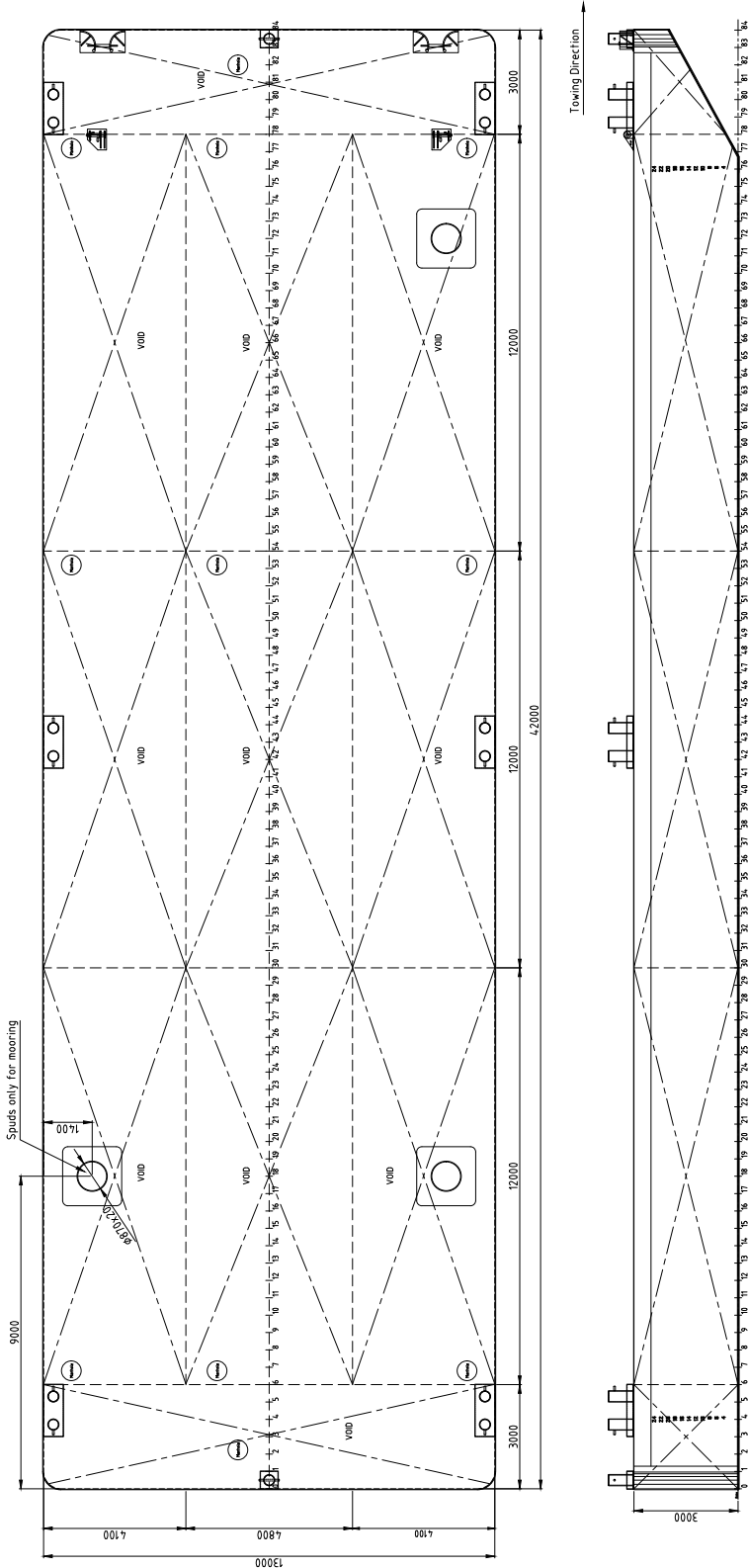


EuroPontoon 4213 | NP 607

GENERAL	
YEAR BUILT	2024
HOME PORT	Aalst
CLASSIFICATION	Bureau Veritas  HULL-pontoon Unrestricted Navigation Unmanned Towing

DIMENSIONS	
LENGTH O.A.	42,00 meter
BREADTH MLD.	13,00 meter
DEPTH AT SIDE	3,000 meter
DRAUGHT MAX	2,300 meter
DRAUGHT MIN	0,500 meter
CAPACITY	
GROSS TONNAGE	418,00 ton
NET TONNAGE	125,00 ton
LIGHT WEIGHT	252.000 ton
CARGO CAPACITY	Approx. 985 ton
DECK LOAD	10,00 ton m ²
CONSTRUCTION	
DECK PLATE THICKNESS	12,00 mm
SHEERSTRAKE THICKNESS	25,00 mm
NUMBER OF COMPARTMENTS	11 void spaces

STANDARD OUTFITTING	
BOLLARDS	6 x double bollards 1 single fore and 1 single aft ship
MANHOLES	Flush type manholes
TOWING BRACKETS	2 x SMIT brackets SWL 65 ton at the bow
FAIRLEADS	
SPUD CANS	3 times- 2 x at SB side, 1x at PS aft
BOARDING LADDERS	
EXTRA	
OPTIONS	
TOWING ARRANGEMENT	Towing bridle with chains and emergency towing arrangement
DECK EQUIPMENT	Various of all kind and different deck equipment; cranes, winches, power-packs, accommodation units ect
SPUD POLES	Spuds with a diameter of 914 mm
SPUD HANDLING ARRANGEMENT	Spuds leg lifting cylinders, including stand diesel driven hydraulic power unit (HPU)
RO-RO RAMPS	



EuroPontoon 4213 | NP 607

For more information, please contact us on:

T +31 (0)184 621 423 E info@neptunemarine.com W www.neptunemarine.com

Version: V.02

