



MSB 3301 | Pontoon

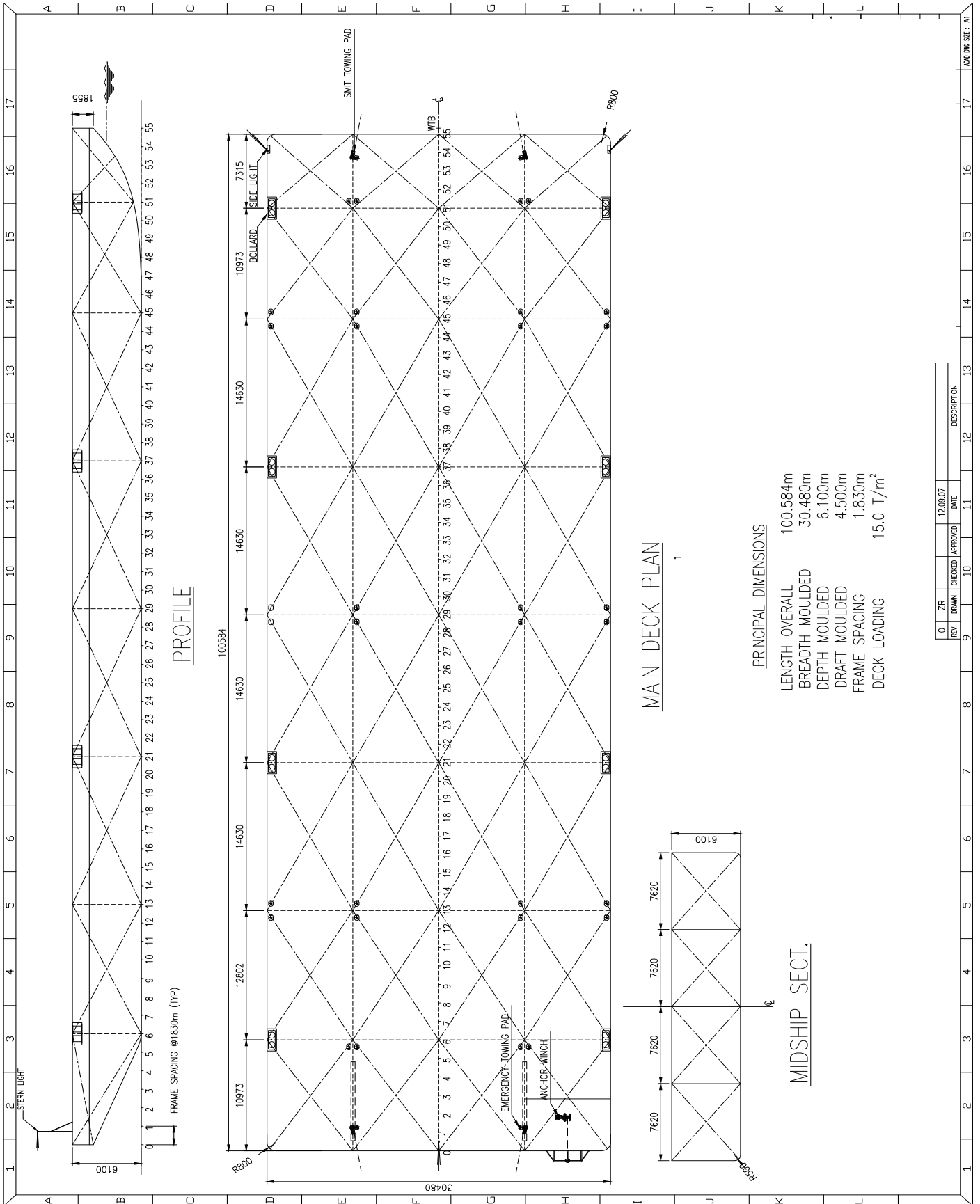


Neptune offers a wide range of deck equipment, including accommodation units, mooring equipment and cranes.

GENERAL	
IMO NR.	8677299
CALL SIGN	PCZZ
YEAR BUILT	2007
HOME PORT	Rotterdam
CLASSIFICATION	LLOYD'S REGISTER, *100AT, PONTON, WDL(15T/M2), UNMANNED TOWING 2007

DIMENSIONS		
LENGTH O.A.	100,58	meters
BREADTH O.A	30,48	meters
DEPTH AT SIDE	6,10	meters
DRAUGHT MAX	4,76	meters
DRAUGHT MIN	0,85	meters
CAPACITIES		
GROSS TONNAGE	4.969	ton
NET TONNAGE	1.490	ton
LIGHTSHIP WEIGHT	2.109	ton
CARGO CAPACITY	11.475	ton
DECK LOAD	15	ton m ²
CLEAR DECK AREA	3.066	m ²
CONSTRUCTION		
DECK PLATE THICKNESS	20mm	
DECK LONGITUDINAL	150 x 90 x 9	
DECK LONG. FRAME SPACING	1.830 mm	
SIDE SHELL PLATING	14 & 16 mm	
SIDE LONGITUDINALS	125 x 9 x 7	
SIDE FRAME SPACING	1.830 mm	
BOTTOM PLATING	14 mm	
BOTTOM LONGITUDINALS	150 x 90 x 12	
BULKHEADS PLATING	14 mm	
BULKHEADS STIFFENERS	100 x 75 x 7/125 x 75 x 10	

STANDARD OUTFITTING	
BOLLARDS	8x recessed double 2x single on bow and aft.
TOWING BRACKETS	3x SMIT Brackets
BRIDLE RECOVERY WICH	Yes, including frame
BOARDING LADDERS	Structure ladders
(EMERGENCY) TOWING BRIDLE	Yes, both



0	ZR	CHECKED	APPROVED	DATE	DESCRIPTION
	REV.	DRAWN		12.08.07	

MSB 3301 | Pontoon

For more information, please contact us on:
 T +31 (0)184 621 423 E info@neptunemarine.com W www.neptunemarine.com
 Version: V.02

